

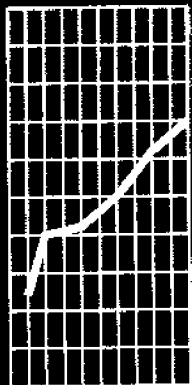


September 1997

EMBARGO: 11:30 AM (CANBERRA TIME) MON 1 SEP 1997

# South Australian Economic Indicators

Statistics ■



## ABS PUBLICATIONS, SOUTH AUSTRALIA

Cat. No.	Publication	Latest issue	Date of issue
<b>GENERAL</b>			
1202.4	Information Paper : Guidelines for the Development of Community Surveys <i>irr</i>		14 Nov. 1985
1301.4	South Australian Year Book <i>a</i> (\$35.00)	1997	18 Dec. 1996
1304.4	Local Government Area Statistics <i>irr</i> (\$20.00)	1993	30 July 1993
1306.4	South Australia at a Glance <i>a</i>	1997	9 May 1997
1307.4	South Australian Economic Indicators <i>m</i> (\$19.50)	Aug. 1997	4 Aug. 1997
1352.4	Sales of Goods and Services by Businesses Involved in Water Related Activity in South Australia <i>irr</i> (\$13.00)	1994-95	7 Dec. 1995
<b>POPULATION AND VITAL STATISTICS</b>			
2840.4	Adelaide, a Social Atlas <i>irr</i> (\$45.00)	Census 1991	31 Mar. 1993
2841.4	Aboriginal People in South Australia <i>irr</i> (\$15.00)	Census 1991	11 Feb. 1994
3201.4	Estimated Resident Population in Statistical Local Areas, Preliminary <i>a</i> (\$13.50)	30 June 1996	31 Jan. 1997
3202.4	Estimated Resident Population in Statistical Local Areas <i>irr</i> (\$10.00)	June 1986 to 1991	28 Oct. 1993
3204.4	Estimated Resident Population by Age and Sex in Statistical Local Areas <i>a</i> (\$14.50)	30 June 1995	25 Mar. 1996
3311.4	Demography <i>a</i> (\$20.00)	1995	11 June 1997
<b>SOCIAL STATISTICS</b>			
4104.4	Aboriginal Births and Deaths, Review of Data Quality and Statistical Summary <i>irr</i> (\$9.50)	1988	16 Mar. 1990
4175.4	Participation in Sporting and Physical Recreational Activities <i>irr</i> (\$14.50)	Oct. 1995	21 Dec. 1995
4190.4	National Aboriginal and Torres Strait Islander Survey <i>irr</i> (\$17.00)	1994	17 Sept. 1996
4195.4	Aboriginal and Torres Strait Islander People at a Glance <i>irr</i> (\$1.00)	1994	27 Sept. 1996
4402.4	Community and Volunteer Work <i>irr</i> (\$7.50)	Oct. 1988	4 Aug. 1989
4509.4	Crime and Safety <i>irr</i> (\$11.50)	Apr. 1995	31 Aug. 1995
<b>PUBLIC FINANCE</b>			
5502.4	Local Government Finance <i>a</i> (\$10.70)	1991-92	21 May 1993
5503.4	State and Local Authorities Finance <i>a</i> (\$13.30)	1991-92	2 July 1993
<b>LABOUR FORCE AND EMPLOYMENT CONDITIONS</b>			
6204.4	Womens Work <i>irr</i> (\$3.00)	July 1992	23 July 1992
6215.4	Women's Employment Patterns, Adelaide Statistical Division <i>irr</i> (\$10.00)	Nov. 1992	17 Feb. 1993
6301.4	Work Related Injuries and Illnesses <i>irr</i> (\$13.50)	Oct. 1996	23 Dec. 1996
<b>RURAL</b>			
7111.4	Principal Agricultural Commodities, Preliminary <i>a</i> (\$13.50)	1995-96	11 Sept. 1996
7113.4	Agriculture <i>a</i> (\$23.00)	1995-96	25 July 1997
<b>MANUFACTURING</b>			
8221.4	Manufacturing Industry <i>a</i> (\$17.00)	1994-95	7 Apr. 1997
<b>INTERNAL TRADE</b>			
8623.4	Retailing in South Australia <i>irr</i> (\$15.00)	1991-92	21 Jan. 1994
8635.4	Tourist Accommodation <i>q</i> (\$15.50)	Mar. qtr 1996	13 June 1997
<b>BUILDING</b>			
8731.4	Building Approvals <i>m</i> (\$15.50)	June 1997	30 July 1997
8741.4	Dwelling Unit Commencements Reported by Approving Authorities <i>m</i> (\$13.00)	Sept. 1996	19 Mar. 1997
8752.4	Building Activity <i>q</i> (\$14.00)	Mar. qtr 1997	31 July 1997
<b>TRANSPORT</b>			
9203.4	Drivers and Passengers : Travel to Work, Adelaide Statistical Division <i>irr</i> (\$10.00)	Oct. 1993	14 Dec. 1993

# **SOUTH AUSTRALIAN ECONOMIC INDICATORS**

**September 1997**

**P.M. GARDNER**  
Regional Director

**AUSTRALIAN BUREAU OF STATISTICS**

**CATALOGUE NO. 1307.4**

© Commonwealth of Australia 1997

## PREFACE

*South Australian Economic Indicators* is a monthly publication which contains the latest available data at the time of preparation for a range of statistical series that have been identified as indicators of economic activity in this State. In a number of cases the figures presented are preliminary and subject to revision in subsequent issues.

Written and graphic commentary have been included for many of the selected series and analysis has been augmented with the calculation of the percentage change from the previous reference period together with the presentation of comparative Australian data.

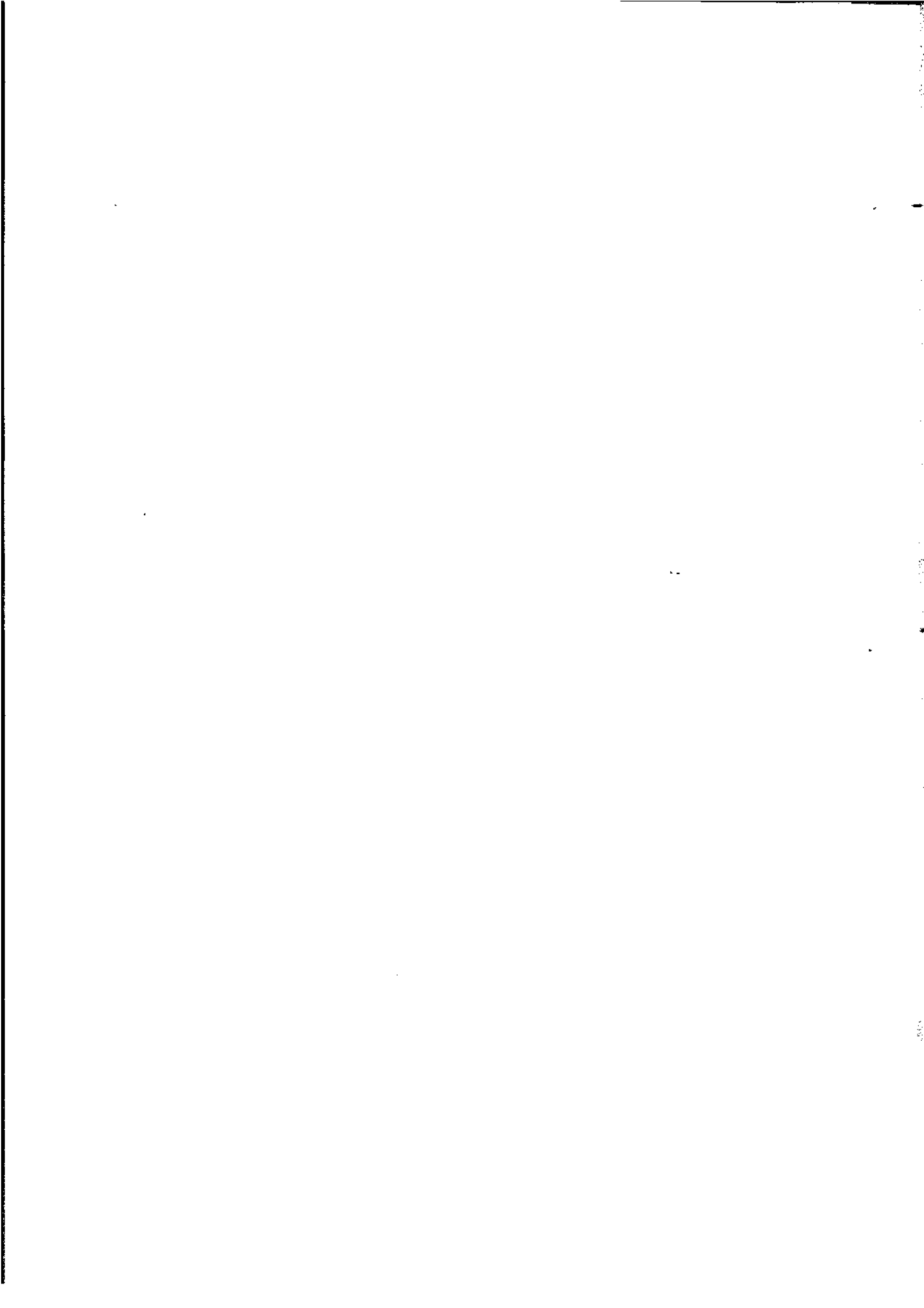
Time series information has been included to provide a historical perspective on many of the selected indicators. Future issues may be expanded to include further historical data in response to expressed user needs. This product is under continuous review and any suggestions for enhancement will be welcomed.

More detailed information on each series, including explanatory and technical notes, can be obtained from other Australian Bureau of Statistics publications or alternative data sources. To assist those seeking further information a source publication for each of the series has been documented in the statistical summary.

If you have any inquiries concerning this publication please contact the editor, John Callinan, telephone (08) 8237 7307. All requests for statistical information should be directed to the ABS Information Service, GPO Box 2272, Adelaide SA 5001, telephone (08) 8237 7100.

P.M. GARDNER  
Regional Director

Australian Bureau of Statistics  
Adelaide  
August 1997



# CONTENTS

	Page
Preface	iii
<b>REVIEW</b>	<b>2</b>
Overview	
State accounts	
International accounts	
Consumption and investment	
Production	
Prices	
Labour force and demography	
Incomes	
Financial markets	
Forward outlook	
<b>STATISTICAL SUMMARY</b>	<b>20</b>
State accounts	
International accounts	
Consumption and investment	
Production	
Prices	
Labour force and demography	
Incomes	
Financial markets	
<b>TIME SERIES</b>	
State accounts - current prices	22
State accounts - average 1989-90 prices	23
Merchandise exports by commodity group	24
Merchandise exports by country	24
Merchandise exports by industry of origin	25
Merchandise imports by commodity group	25
Turnover of retail establishments by industry	26
New motor vehicle registrations by type of vehicle	27
Actual private new capital expenditure by selected industry and type of asset	28
Tourist accommodation	29
Building approvals	30
Building commencements	31
Value of building work done during period	31
Production, livestock and selected commodities	32
Consumer price index, by group	34
Average retail prices of selected consumer items	35
Estimated resident population and components of population change	35
Labour force - numbers	36
Labour force - rates	37
Average weekly earnings of employees	38
Finance commitments	39
For more information	40

# REVIEW

---

## South Australian Overview

---

- Merchandise exports where the final stage of production was in South Australia were valued at \$405.6 million in June 1997, a 15.3% increase on June 1996. Exports for 1996-97 increased 11.4% to a record high \$5,009.5 million.
- In June 1997 the value of merchandise imports released from Customs control in South Australia were \$285.5 million, a 9.2% increase on June 1996. In 1996-97, South Australian imports were valued at \$3,415.5 million, a 9.7% increase on the previous year.
- The trend estimate for retail turnover increased by 0.3% in June 1997.
- The trend for total new vehicle registrations in June 1997 increased 0.5% and continues the growth of the last 9 months.
- The June 1997 trend estimate for total dwelling unit approvals continued to increase for the seventh consecutive month, rising by 2.3% in June.
- The total value of building approved in June 1997 was \$150.7 million of which \$49.5 million was new residential building and \$92.0 million non-residential building.
- Adelaide recorded a rise of 0.3% in the Price Index of Materials used in House Building for the month of June 1997.
- The Price Index of Materials used in Building other than House Building showed no movement in Adelaide for the month of June 1997.
- There were 4,591 short term overseas visitor arrivals to South Australia and 5,515 short term resident departures overseas in May 1997.
- After increasing in the six months to April 1997, the trend estimate of employed persons has decreased marginally over the past 3 months to number 662,000 in July 1997.
- The trend unemployment rate was 9.8% in July 1997.
- There were 1,600 working days were lost through industrial disputes in South Australia during May 1997.
- The trend estimate of average weekly ordinary time earnings of full-time adult male employees in South Australia has increased by 1.6% in the 3 months to May 1997.
- In the 12 months to June 1997, the weekly award rates of pay index for full-time employees in both South Australia and Australia increased by 1.4%.
- Total housing finance commitments (original figures including alterations and additions) decreased 5.0% to \$265.2 million.



## State Accounts

**NOTE:** Deficiencies in the data sources used to estimate gross operating surplus for recent quarters may at times lead to the current price estimates of gross state product GSP(I) being under or over stated for particular States. Consequently, the measured growth rate for constant price GSP(I) for those States will also be affected.

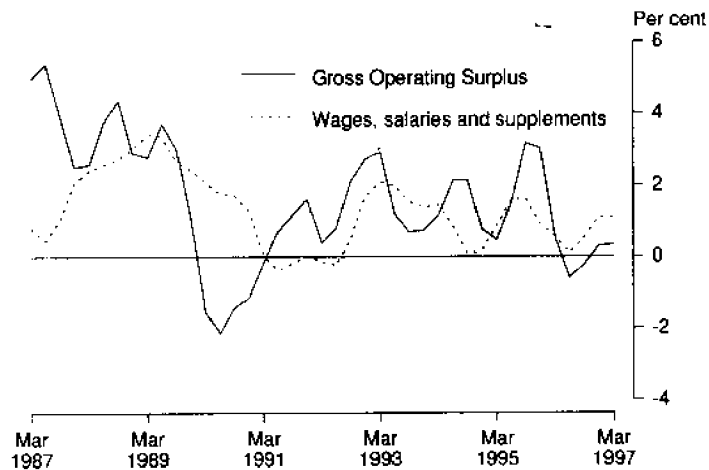
The constant price series for gross state product (GSP) have been labelled as 'experimental'. Users are cautioned that these estimates are derived indirectly by calculating a deflator from the expenditure components. It is emphasised that, at times, movements that can not be fully explained may be introduced into the constant price GSP(I) series through the use of this proxy deflator.

*Trend Estimates  
(Current Prices)*

Growth in GSP of 0.8% in the March quarter was the highest recorded since the December quarter 1995. Despite this increase, the growth of 1.3% through the year to March quarter 1997 was the lowest for any State.

Contributing to the March quarter growth was an increase of 1.1% in wages, salaries and supplements. The annual increase through to March quarter 1997 was 2.9% compared with the national increase of 6.6%.

**WAGES, SALARIES AND SUPPLEMENTS AND  
GROSS OPERATING SURPLUS  
CURRENT PRICES - TREND  
Quarterly Changes**



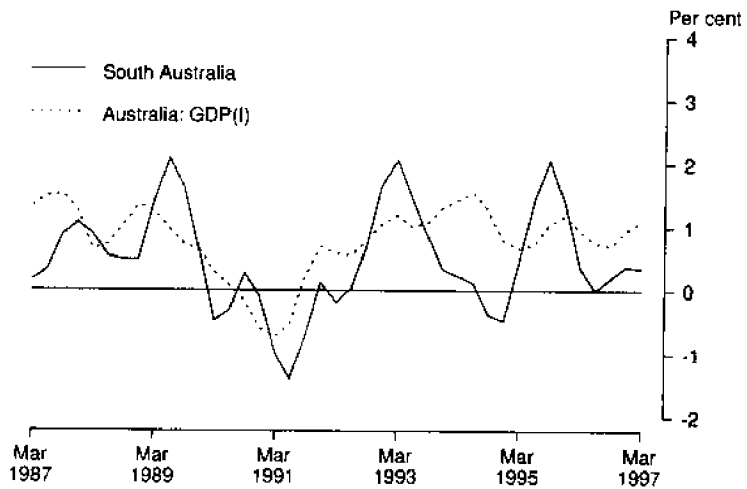
Gross operating surplus increased by 0.3% in the March quarter following similar weak growth in the December quarter 1996. A fall of 0.2% was recorded for the year to March quarter 1997.

Indirect taxes less subsidies increased by 0.7% in the March quarter, the largest increase since March quarter 1996.

*Trend Estimates  
(Constant Prices)*

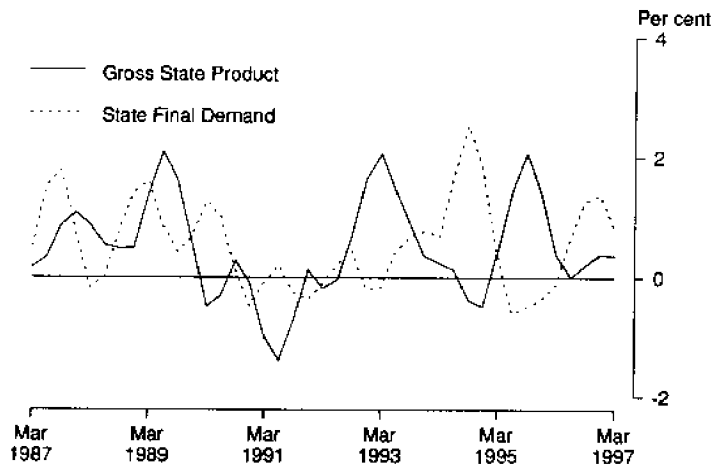
The experimental estimate of GSP at constant prices grew by 0.4% (1.1% nationally) in the March quarter and by 1.0% in the year to March 1997, considerably below the national average of 3.6%.

**GROSS STATE PRODUCT - TREND  
(CONSTANT PRICES)  
Quarterly Changes**



State final demand (SFD) increased by 0.8% in the March quarter and has, for the past four quarters, grown at a faster rate than GSP. Contributing to the growth in SFD was a 1.8% increase in private gross fixed capital expenditure which has shown the highest annual growth to March quarter 1997 (24.1%) of any State.

**GROSS STATE PRODUCT AND  
STATE FINAL DEMAND - TREND  
(CONSTANT PRICES)  
Quarterly Changes**



Private final consumption expenditure grew by 0.3% in the March quarter, the same rate as for the previous two quarters. The increase of 1.2% through the year to the March quarter 1997 was the second lowest of any State and approximately half the national average (2.3%).

## International Accounts

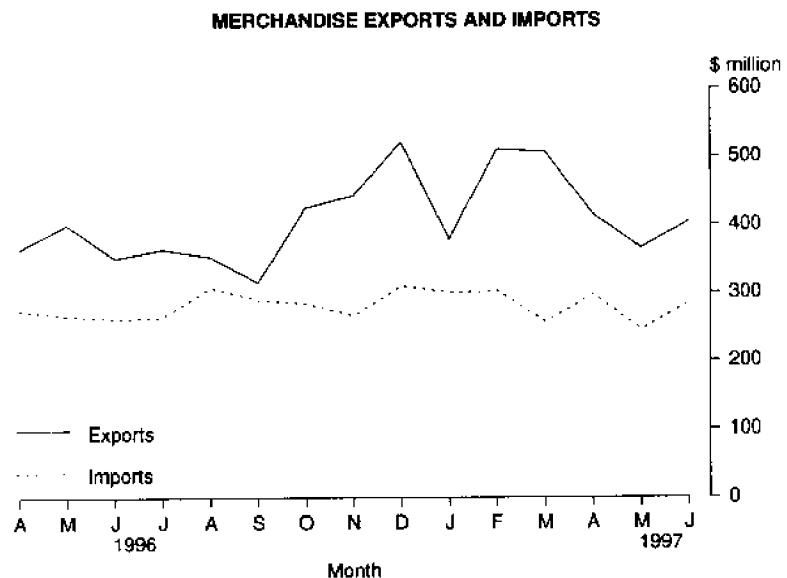
### Exports

Merchandise exports where the final stage of production was in South Australia were valued at \$405.6 million in June 1997, a 10.7% increase on May and 15.3% on June 1996. Petroleum and petroleum products and road vehicles, parts and accessories were the main contributors to the increase, rising by \$22.4 million to \$37.9 million and \$16.9 million to \$56.6 million respectively.

In 1996-97 exports increased 11.4% over the previous year and were valued at \$5,009.3 million. Exports of wine, machinery, road vehicles, parts and accessories, and cereal and cereal preparations were the highest ever recorded. Road vehicles parts and accessories contributed most to the increase, rising from \$249.2 million in 1995-96 to a record high \$655.4 million. Other commodities which also contributed significantly were petroleum and petroleum products, a 30.0% increase to \$287.2 million and wine, a 24.9% increase to \$397.8 million.

The major destinations of South Australian exports in June 1997 were the United States of America with \$82.6 million and Japan with \$57.7 million. Exports to the East Asia region were \$181.1 million, an increase of 9.1% over the previous month.

During 1996-97 exports to the United States of America were valued at \$707.0 million, a large increase on the previous years value of \$279.6 million and mainly the result of increases in the export of road vehicles, parts and accessories. Japan was the the second largest destination for South Australian exports with \$612.7 million, followed by New Zealand with \$381.3 million.



### Imports

In June 1997 the value of merchandise imports released from Customs control in South Australia were \$285.5 million, a 16.1% increase on the previous month and a 9.2% increase on June 1996. The increase of \$39.5 million on the previous month was mainly the result of increases in the importation of road vehicles, parts and accessories, up \$18.6 million to \$54.6 million and machinery, up \$12.0 million to \$66.5 million.

In 1996-97, South Australian imports were valued at \$3,415.5 million, a 9.7% increase on the previous year. Imports of machinery was the major contributor increasing 28.5% to \$868.4 million which represented 25.4% of total imports. Imports of petroleum and petroleum products and road vehicles parts and accessories were also significant, valued at \$506.3 million and \$538.7 million respectively.

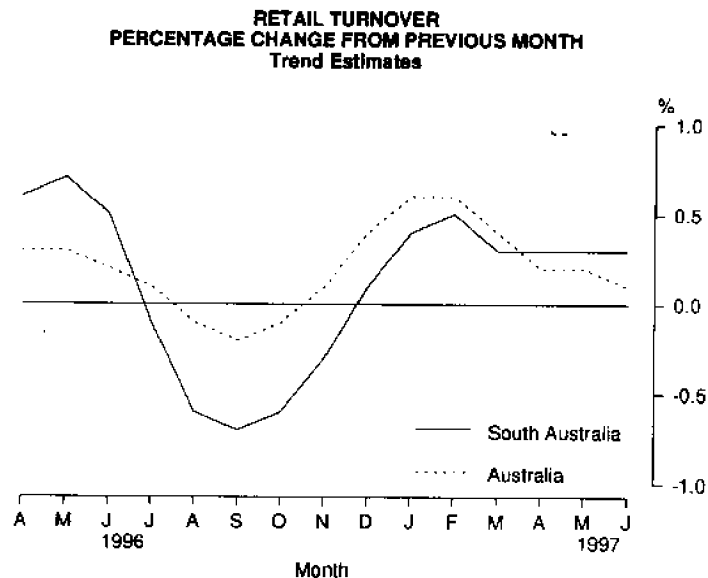
## Consumption and Investment

### Retail Turnover

The trend estimate for retail turnover increased by 0.3% in June 1997 and has been increasing at this rate for the past four months. The Australian trend estimate has continued to ease in recent months with growth of 0.1% for June 1997 after growth of 0.2% in April and May.

Over the three months to June 1997 the trend estimate has grown by \$7.4 million. The major contributors to this growth were hospitality and services (\$3.8 million), clothing and soft good retailing (\$2.6 million), household good retailing (\$2.5 million) and other retailing (\$2.3 million) which was partly offset by decreases in department stores (\$2.5 million) and food retailing (\$0.9 million).

In original terms, South Australian retail turnover was \$717.0 million, a decrease of 1.5% on June 1996. For the year ending June 1997 retail turnover was \$9,175.1 million, a 0.5% decrease on 1995-96. Food retailing and recreational good retailing were the only industries to show an increase, rising 8.5% and 0.5% respectively.



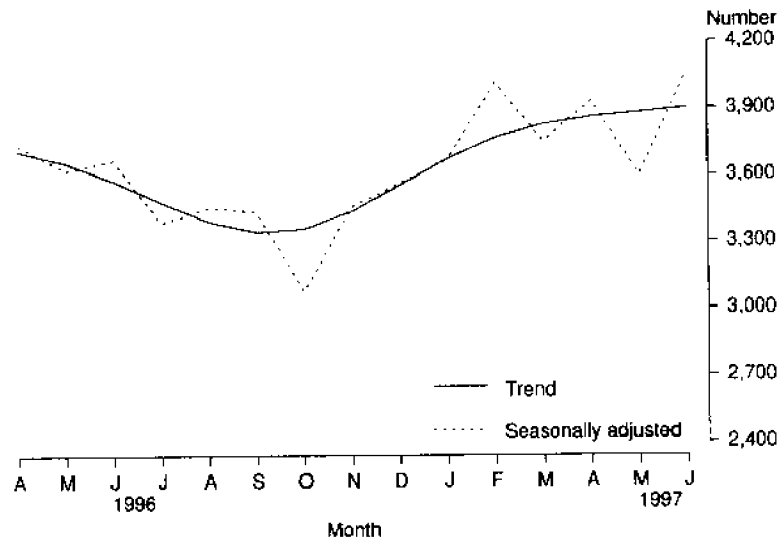
### New Motor Vehicle Registrations

The trend for total new vehicle registrations in June 1997 increased 0.5% and continues the growth of the last 9 months, although the rate of increase has slowed recently.

In original terms there were 4,439 new motor vehicles registered in June 1997, an increase of 22.0% on May and 12.9% on June 1996. For new passenger vehicles, the leading makes registered in June 1997 were Mitsubishi (744 vehicles), Ford (700), Holden (607), Toyota (548) and Hyundai (249).

In the year 1996-97 there were 43,116 new motor vehicles registered which represented a 0.5% increase on 1995-96. Passenger vehicles showed a 0.2% increase (36,146 vehicles) whilst other vehicles increased by 2.1% (6,970 vehicles).

## NEW MOTOR VEHICLE REGISTRATIONS

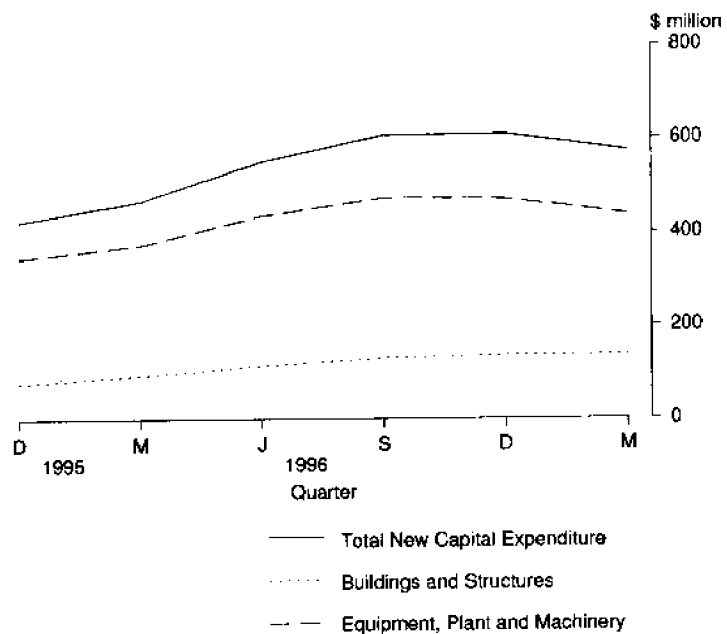


## Private New Capital Expenditure

The trend estimate at current prices for private new capital expenditure in South Australia for the March quarter 1997 decreased by 5.7% from the previous quarter and increased 22.9% on March 1996. The March 1997 data reversed the upward trend evident since December 1995. The Australian figure fell by 0.2%.

Private new capital expenditure in original terms for the March quarter 1997 was \$496 million, a decrease of 24.8% from the December quarter 1996. Buildings and structures accounted for \$125 million, and equipment, plant and machinery \$371 million.

Information on expected capital expenditure data is contained in the Forward Outlook on pages 18 and 19.

PRIVATE NEW CAPITAL EXPENDITURE  
TYPE OF ASSET  
Trend Series

*Tourist Accommodation*

When the March quarter 1997 is compared with the March quarter 1996, the number of holiday flats, units and houses available for short-term letting increased by 7.6%. Unit nights occupied increased by 4.8% while the unit occupancy rate fell from 54.9% to 54.1%. Accommodation takings increased by 8.5% from \$4.5 million to \$4.9 million while average takings per unit night occupied rose from \$65 to \$67.

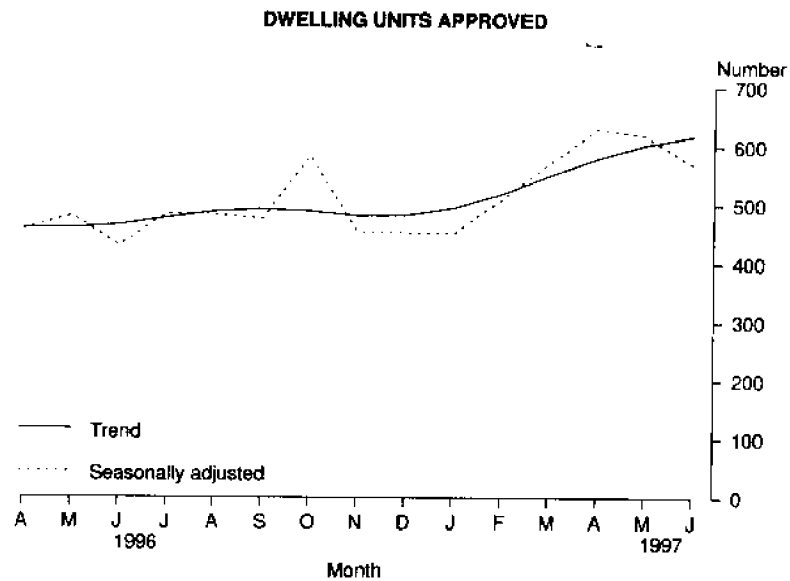
## Production

---

*Dwelling Approvals*

The June 1997 trend estimate for total dwelling unit approvals continued to increase for the seventh consecutive month, rising by 2.3% in June. The total number of dwellings approved, in original terms for June 1997 was 597. Of these, private sector houses accounted for 518 and other residential dwelling units 51. For the year ended June 1997, there were 6,264 dwelling units approved, 5.0% more than the 5,968 approved the previous year.

Trend growth in total dwelling units has flattened for Australia from 2.5% in January to a decrease of 0.3% in June. In original terms, South Australia accounted for 5.1% of the total dwelling units approved in Australia during June 1997. For the year ended June 1997, South Australia accounted for 4.6% of the total dwelling units approved in Australia.

*Dwelling Commencements*

In South Australia, the number of new dwelling units commenced fell during the March quarter 1997 to 1,178, a decrease of 23.0% on the previous quarter. This compares with a fall of 7.3% nationally. When compared with the March quarter 1996 there was a decrease of 9.0% for South Australia while the national figure increased by 2.5%. Expressed as a proportion of the national total, the number of dwelling unit commencements in South Australia was 4.0% compared with 4.8% last quarter.

## DWELLING UNITS COMMENCED



(a) Includes conversions, etc

*Value of Building Approvals*

The total value of building approved in June 1997 was \$150.7 million of which \$49.5 million was new residential building and \$92.0 million non-residential building. The value of non-residential building rose by 42.2% in June 1997, with the largest categories being shops (\$35.9 million), hotels, etc (\$26.7 million) and offices (\$16.1 million).

For the year ended June 1997, shops (\$106.2 million), other business premises (\$93.3 million) and offices (\$93.2 million) were 50.1% of the total value of non-residential building of \$548.5 million.

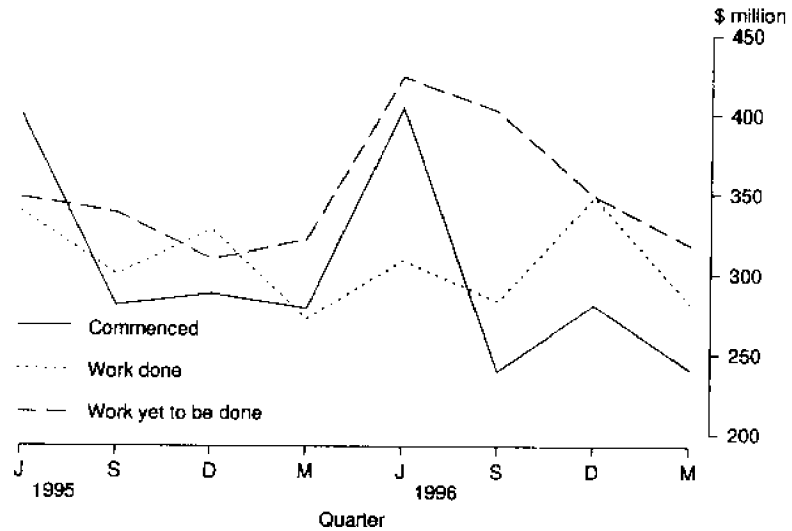
*Value of Total Building Activity*

The total value of building work commenced in South Australia during the March quarter 1997 fell by 14.3% to \$240.7 million. This decrease can be attributed to the residential building sector which had fallen 25.7% to \$124.6 million from the previous quarter.

The total value of building work done during the March quarter 1997 decreased by 18.9% to \$282.3 million with both the residential and non-residential building sectors recording falls of more than 13.0%. Nationally the value of work done also recorded a decrease, falling 9.2% to \$6,658.3 million.

For the March quarter 1997, the total value of building work yet to be done in South Australia was \$318.1 million, a decrease of 8.8% from the previous quarter while the corresponding national figure increased by 3.5%. Expressed as a proportion of the national total, the total value of building work yet to be done in South Australia was 3.2% for the March quarter 1997 down from the previous quarter of 3.6%.

## VALUE OF BUILDING ACTIVITY



## Value of Engineering Construction

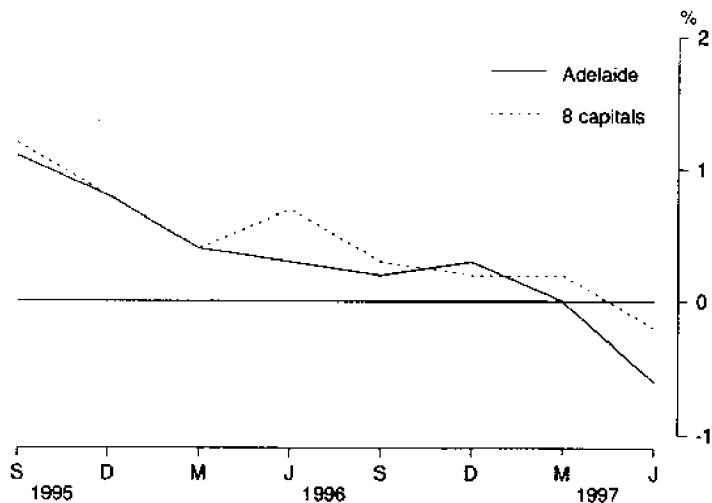
In March quarter 1997, the value of engineering construction work done in South Australia remained constant at \$187.6 million compared with a 14.1% fall nationally. South Australia had a 5.7% share of the national total of \$3,318.7 million. The value of work commenced during the quarter increased by 13.4% to \$240.4 million for South Australia while the corresponding national figure fell by 17.1% to \$3,114.7 million. The South Australian proportion of national commencements was 7.7% for the March quarter 1997.

## Prices

## Consumer Price Index

The Consumer Price Index (all groups) in Adelaide decreased by 0.6% between the March and June quarters 1997. A fall in the index was last recorded in June quarter 1992. Contributing most to the overall decrease for the June quarter were falls in mortgage interest charges, motor vehicles and fuels.

The annual movement in the Adelaide index was (-0.1%). Adelaide and Canberra were the only cities to report a fall, with the other capitals showing increases ranging from 0.3% to 0.6%. The comparative Australian data shows a 0.2% decrease for the June quarter 1997 and an annual increase of 0.3%.

CONSUMER PRICE INDEX  
Change from previous quarter

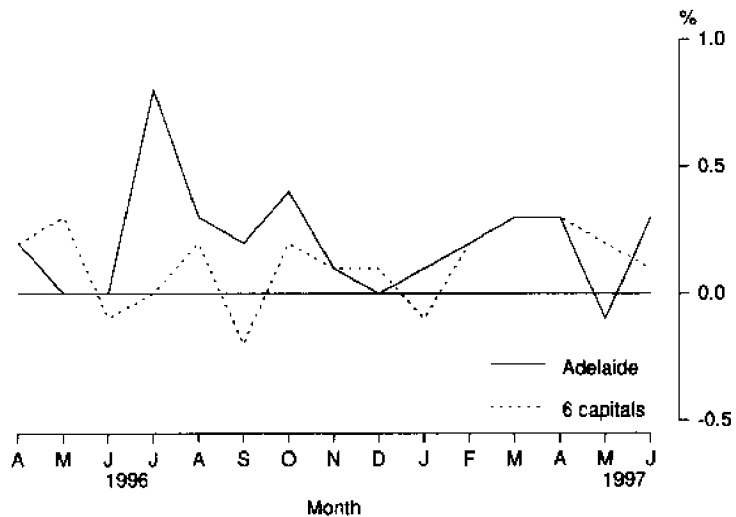


*House Building Materials*

Adelaide recorded a rise of 0.3% in the Price Index of Materials used in House Building for the month of June. The main factor contributing to the rise was an increase in plastic pipes and fittings. The weighted average for the six State capitals rose 0.1% for the same period.

For the twelve months to June, a rise of 3.0% was recorded in the Index for Adelaide, with only a 1.4% rise for the weighted average of the six State capitals.

**MATERIALS USED IN HOUSE BUILDING**  
Change from previous month

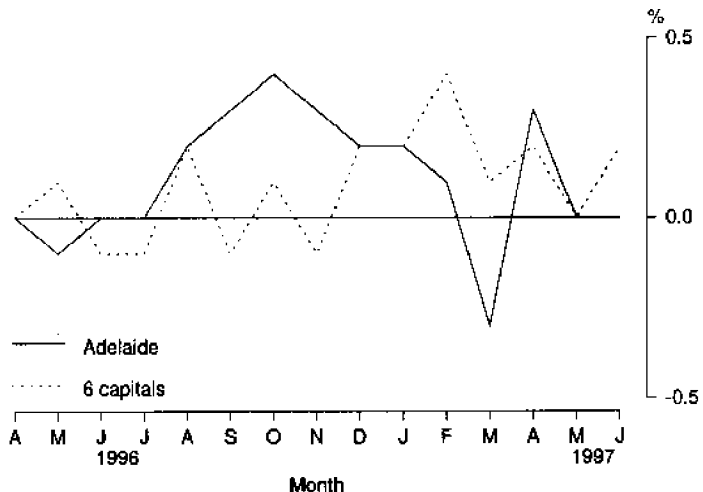


*Non-house Building Materials*

The Price Index of Materials Used in Building Other than House Building showed no movement in Adelaide for the month of June 1997. The weighted average of the six State capitals recorded a rise of 0.2% for the same period.

The Index shows a rise of 1.6% for the twelve months to June for Adelaide, with the weighted average of the six State capitals showing a 1.2% rise.

**MATERIALS USED IN BUILDING OTHER THAN HOUSE BUILDING**  
Change from previous month



*House Prices*

During the March quarter 1997 the Price Index of Established Houses in Adelaide increased 2.4% and the Project Home Index increased 0.4%. The weighted average of the eight capital cities index, over the same period showed a 0.9% increase for established houses and a 0.1% increase for project houses.

Over the year to the March quarter 1997 the Established House Price Index for Adelaide rose 1.5% whilst the Project Home Price Index fell by 4.8%. Nationally, the indexes showed a 2.8% increase and a 0.3% decrease respectively.

### Passenger Transport Costs

The passenger transport cost index measures changes in the costs of operating a public transport passenger bus service in Adelaide. Costs covered include labour costs, leasing charges, registration and insurance, repairs and maintenance, fuel and overheads. The index has been compiled on a quarterly basis from September 1995 with a base of 100.0 in 1993-94. The June quarter 1997 index was 108.0, and showed no movement between March and June 1997. The index showed a 3.6% increase in the 12 months to June 1997.

## Labour Force and Demography

### Population

At 31 December 1996 the estimated resident population of South Australia was 1,476,773. This was an increase (1,356) persons from the September quarter. The continuing low growth for South Australia is attributable to a net outflow in interstate migration of 1,427 persons which was partly offset by a net inflow of overseas migration of 1,003 persons. In the December quarter there was a natural increase of 1,780 persons.

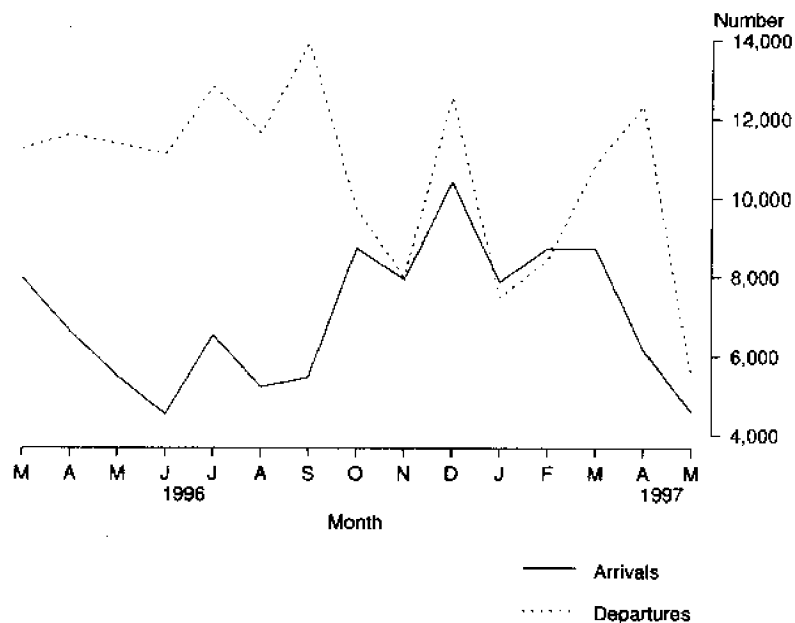
### Short term Overseas Visitor Arrivals

There were 4,591 short term overseas visitor arrivals to South Australia in May 1997. This represents a fall of 25.6% on April arrivals and was 16.5% lower than May 1996. Arrivals to Australia also fell, down 11.3% from April but 10.5% above May 1996. The South Australian share of the short term overseas visitor market decreased to 1.6% in May 1997.

### Short term Resident Departures

In May 1997 there were 5,515 short term resident departures overseas from South Australia. This fell by 55.3% from April 1997 and 51.4% from May 1996. Australia recorded a 43.6% increase to 305,384 resident departures in May 1997, with South Australia accounting for 1.8% of the total departures.

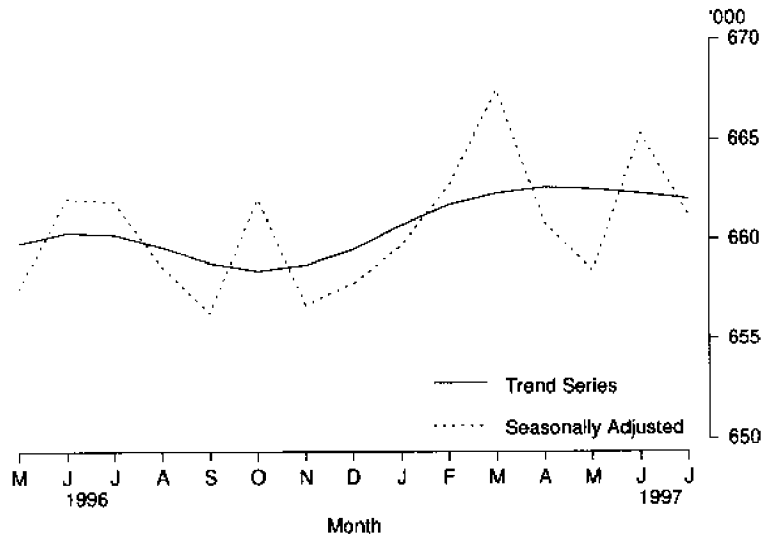
SHORT TERM OVERSEAS ARRIVALS AND DEPARTURES



### Employment

After increasing in the six months to April 1997, the trend estimate of employed persons in South Australia has decreased marginally over the past 3 months and was 662,000 in July 1997. This constitutes an increase of 0.3% over the level of twelve months ago. The main contributing factor has been a 0.6% increase in full-time employment, up to 474,300 in July 1997.

**EMPLOYED PERSONS**

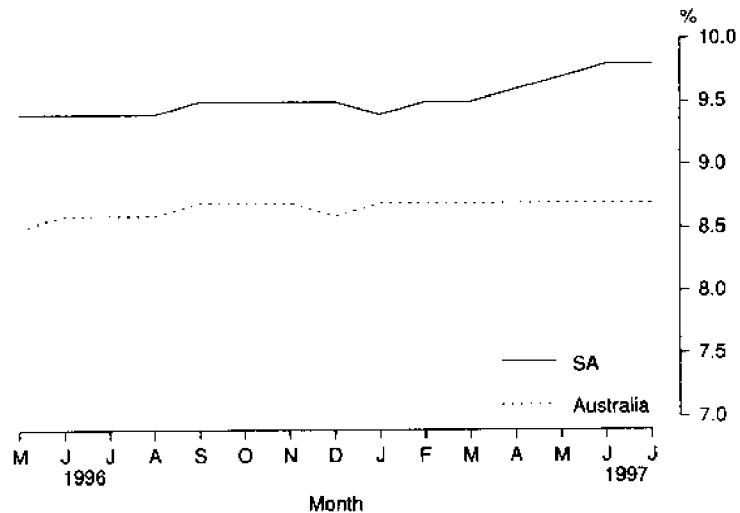


*Unemployment*

The trend unemployment rate for South Australia was 9.8% in July 1997, higher than the level for July 1996 (9.4%). In original terms, South Australia has also experienced a rise in long-term unemployment (i.e. unemployed for 52 weeks or more). The estimate has increased by 28.9%, from 20,100 in July 1996 to 25,900 in July 1997.

For Australia, the trend estimate of the unemployment rate has remained at 8.7% during 1997. The corresponding rate for July 1996 was 8.6%. In original terms, Australia has experienced a 14.1% increase in long-term unemployment, up from 208,860 in July 1996 to 238,240 in July 1997.

**UNEMPLOYMENT RATES  
Trend**



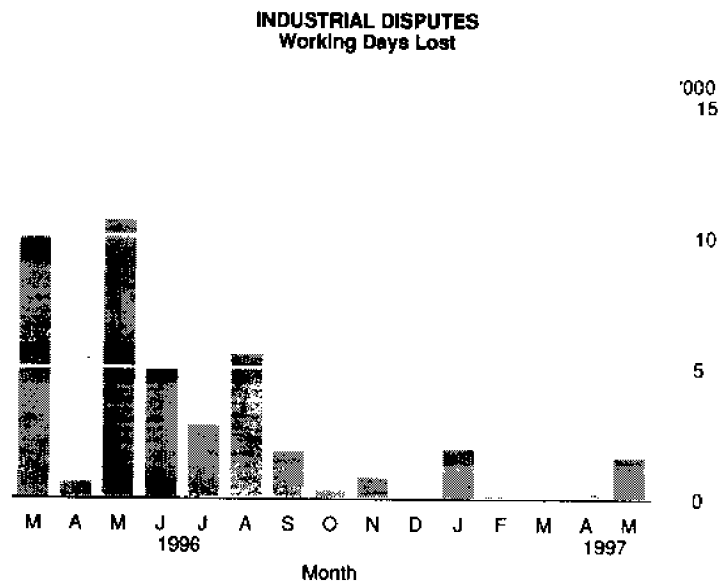
*Overtime*

In original terms, the proportion of employees who worked overtime in South Australia in May 1997 was 15.9%. This was lower than the May 1996 estimate of 16.1%.

In May 1997, employees who worked overtime in South Australia recorded an average of 6.8 overtime hours per week. This was higher than the 6.6 overtime hours recorded a year earlier.

*Industrial Disputes*

There were 1,600 working days were lost through industrial disputes in South Australia during May 1997. At only 2.4% of the national total (65,200 days), this was the lowest level recorded by any mainland State. The number of working days lost for the year ending May 1997 was 20,000, a decrease of 9,400 over the preceding 12 months.

**Incomes***Average Weekly Earnings*

The trend estimate of average weekly ordinary time earnings of full-time adult male employees in South Australia has increased by 1.6%; up from \$682.30 in February 1997 to \$692.90 in May 1997. For females, the corresponding increase was less pronounced at 0.9%; up from \$579.30 in February 1997 to \$584.40 in May 1997.

Between February 1997 and May 1997, the trend estimate of average weekly total earnings of all employees (including part-time workers) in South Australia rose by 1.3% to \$536.20. Over the same period, the national level increased by 0.5% to \$546.60.

Note: Since it is an average of earnings across all employees, changes in average weekly earnings may occur through changes in employment as well as changes in pay levels.

*Award Rates of Pay*

In the 12 months to June 1997, the weekly award rates of pay index for full-time employees in both South Australia and Australia increased by 1.4%.

For both full-time adult male and female employees in South Australia, the largest annual movement in the index occurred in Manufacturing, with increases of 2.0% and 6.8% respectively. In contrast, for the Communication industry division, both sexes recorded a nil movement in the index.

**Note:** This is the last month of issue of this index. It will be replaced by a wage costs index, due for release in May 1998 and covering the December 1997 quarter. Non-wage costs, for example fringe benefits tax and payroll tax, will be added in consecutive stages to produce a composite labour costs index. This indicator should be available in early 1999.

The decision to cease production of the award rates of pay index is based on various factors: the increased incidence of enterprise or workplace agreements; the gradual decline in union membership; and the growth in casual, temporary and fixed term contractual work. Award rates of pay can no longer effectively describe pay shifts for this multiplicity of working arrangements.

## Financial Markets

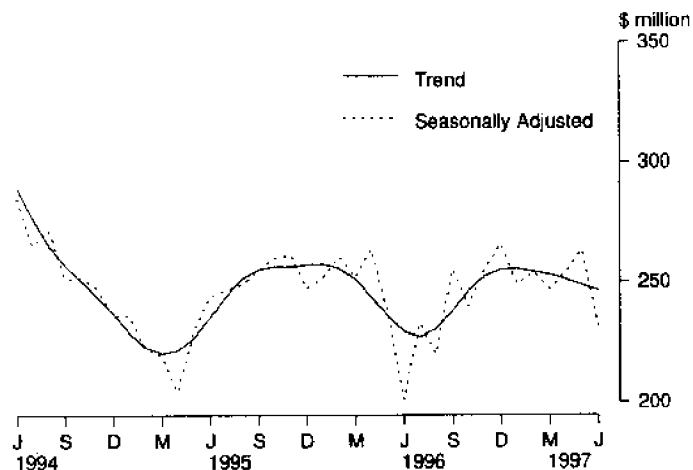
### Housing Finance

The trend estimate for the value of commitments decreased to \$246.5 million in June 1997 and has been dropping since January 1997, but was still 7.3% higher than June 1996. Seasonally adjusted, the value of commitments in South Australia was \$232.1 million, down 11.9% on May.

Total housing finance commitments (original figures including alterations and additions) decreased 5.0% to \$265.2 million, 10.6% above the previous June. Nationally the decrease was 5.0% for the month, 20.0% above the previous June. The State's housing commitments continue to represent 5.8% of the national total.

Commitments for the purchase of established dwellings (the main category) were down 2.7% to \$159.5 million, 15.3% above the previous June. Construction of dwellings decreased 14.7% to \$33.9 million following the high May figure. This was 5.6% of the national total and 25.8% above June 1996, and means the past three months have been significantly above the corresponding months of the previous year. Commitments for newly erected dwellings were down 24.4% to \$7.0 million. Refinancing increased marginally to \$53.0 million, 20.7% above June last year. Alterations and additions decreased 19.8% to \$11.9 million, 54.6% below the previous June.

**SECURED HOUSING FINANCE COMMITMENTS  
TO INDIVIDUALS (ALL LENDERS)  
(Excluding Alterations and Additions)  
Monthly Total**



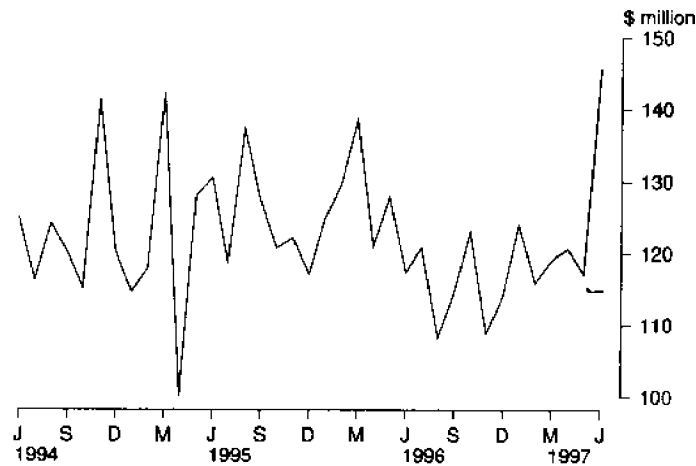
### Personal Finance

Total commitments increased 9.0% to \$274.4 million in June with the big increase in fixed loan commitments only partially offset by the fall in revolving credit commitments. Nationally, total commitments rose 5.8% to be 22.0% above June 1996.

Fixed loan commitments increased 24.6% to \$145.8 million, the highest recorded figure and 24.3% above June 1996. The largest increase was for used motor vehicles and station wagons, up 30.1% to \$44.6 million, representing 8.9% of the national total and 25.3% above the previous June. Refinancing increased 58.7% to \$26.5 million, 16.9% above June 1997. The largest fall was for debt consolidation down 11.6% to \$12.9 million following the high May figure.

Revolving credit facilities decreased 4.5% to \$128.6 million, with secured credit facilities down 8.5% to \$82.9 million and unsecured revolving credit facilities increasing 3.7% to \$45.7 million. (Note: There are difficulties at present in obtaining reliable State secured commitments under revolving credit facilities).

**PERSONAL FINANCE COMMITMENTS  
FIXED LOAN COMMITMENTS  
(ALL LENDERS)  
Monthly Total**



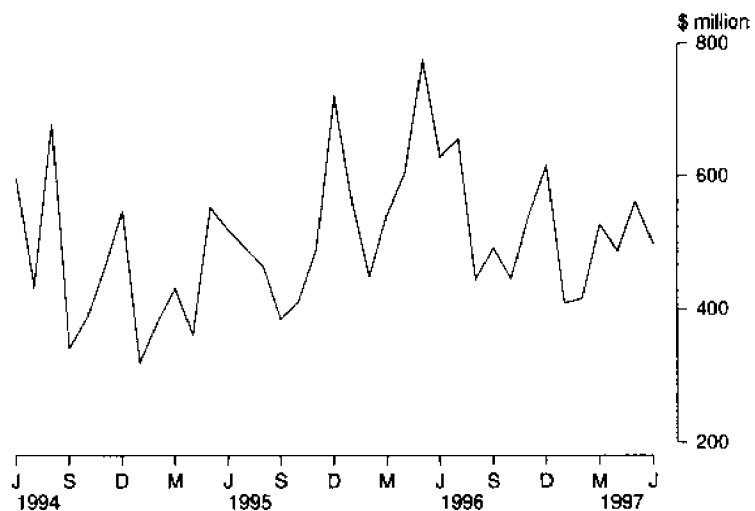
#### Commercial Finance

Total commercial finance commitments decreased 11.3% to \$497.9 million, 20.7% below June 1996. South Australia's proportion of the national total was 3.2%. All the past seven months have been significantly below the corresponding months of the previous year.

Revolving credit facilities decreased 37.8% to \$141.3 million, 2.0% of the national total and 22.3% below June 1996. The main decreases were for manufacturing, down \$42.1 million to \$25.0 million and mining, down \$24.7 million to \$0.3 million. The main increase was recreational, personal and other services which increased \$24.5 million to \$28.2 million.

Commitments under fixed loan facilities increased 6.7% to \$356.6 million, 4.4% of the national total and 20.0% below the previous June. The increase came mainly from the other industries category which reached \$139.0 million. The main falls were for manufacturing down 62.8% to \$16.9 million following the high May figure and property and business services down 56.6% to \$18.4 million.

**COMMERCIAL FINANCE COMMITMENTS**  
Monthly Total



### Lease Finance

The value of goods under new finance lease commitments increased 47.6% to \$30.6 million, for the annual June peak. This was marginally below June 1996. Nationally the increase for the month was 40.9%, marginally above the previous June.

The main categories to increase were manufacturing equipment (up \$4.4 million to \$5.0 million), used motor cars and station wagons (up \$1.7 million to \$4.8 million) and agricultural machinery and equipment (up \$1.6 million to \$3.1 million). New motor cars and station wagons not subject to depreciation (the largest category) increased 12.7% to \$6.5 million, the third consecutive monthly increase and 1.0% above June 1996. The main fall was for office machines down 32.6% to \$1.7 million following the high May figure.

## Forward Outlook

### Composite Leading Indicator

The Composite Leading Indicator (CLI) is a single time series produced by aggregating eight individual economic indicators, and has been developed by the ABS as an experimental series to supplement existing forms of economic analysis and modelling.

The CLI summarises the early signals contained in a selection of economic indicators and is designed to assist the detection of turning points between successive expansions and slow downs of economic activity as measured by constant price GDP(A). It does not attempt to forecast the level of economic activity.

In the March quarter 1997 :

- the experimental CLI rose 0.11%, following rises of 0.23% and 0.22% in the September and December quarters respectively;
- the last turning point in the deviation from its long-term trend for average Gross Domestic Product GDP(A) was a peak in the March quarter 1996. The largest positive contribution came from the production expectations, while the largest negative contribution was from the (lagged) inverted real interest rate.

The quarterly data are released in more detail in the *Australian Economic Indicators* (Cat. no. 1350.0). The CLI was the topic of the Focus article in the September 1993 edition of *South Australian Economic Indicators* (1307.4). A review of the performance of the CLI and its components was published in the July 1997 issue of 1350.0.

Surveys of business expectations have been available to decision makers for a number of years from several sources. These surveys provided *qualitative* indicators in the form of the net proportion of businesses expecting a rise or fall in future business conditions. Since the December quarter 1993, the ABS has been compiling a *quantitative* indicator of business expectations in the form of an expected weighted aggregate change in a range of economic variables. These data are available on a quarterly basis in *Australian Business Expectations* (Cat. no. 5250.0).

**AUSTRALIAN BUSINESS EXPECTATIONS SOUTH AUSTRALIA AND AUSTRALIA  
SALES OF GOODS AND SERVICES  
EXPECTED PERCENTAGE AGGREGATE CHANGE**

Reference Period	Short term		Medium term	
	Expected aggregate change between		Expected aggregate change between	
	Mar. 1997 and June 1997	June 1997 and Sep. 1997	Mar. 1997 and Mar. 1998	Sep. 97 and Sep. 98
	%	%	%	%
South Australia	2.8	0.0	4.0	3.4
Australia	1.6	0.7	2.9	2.4

*Short term*

Businesses in South Australia expect no change in sales of goods and services in the September quarter 1997 compared with the June quarter while the Australian expectation was a 0.7% increase. Nationally, sales of goods and services are expected to increase in all industries except construction (-3.2%) and retail (-0.1%).

*Medium term*

Businesses in South Australia expect sales of goods and services in the June quarter 1998 to be 3.4% above June quarter 1997. The Australian expectation was for 2.4% growth. The South Australian expectation of 3.4% was the second largest of all States and Territories.

Expected New Capital  
Expenditure

State estimates of actual new capital expenditure by private businesses in Australia are compiled each quarter. Details appear on pages 7, 20 and 28 of this publication.

Each December businesses in the survey are asked for details of their longer term expectations for capital expenditure by State enabling estimates to be made for periods 6 months and 18 months ahead of the reference period. The collection of expectations in the December quarter survey also allows the derivation of a composite estimate (6 months actual plus 6 months expectations) for that financial year.

The following table shows the forward estimates made with the December 1996 collection.

**EXPECTED PRIVATE NEW CAPITAL EXPENDITURE  
BY SELECTED INDUSTRY AND TYPE OF ASSET  
SOUTH AUSTRALIA**

Selected industries and type of asset	6 months to June 1997	1996-97	1997-98
	\$m	\$m	\$m
Mining	140	280	228
Manufacturing	642	1 051	702
Other	502	1 240	857
Total expenditure	1 284	2 571	1 787
Buildings etc.	302	596	511
Equipment etc.	982	1 975	1 276



Once actual expenditure for a financial year is known, it is useful to investigate the relationship between previous expectations and the expenditure that was actually incurred. The resultant realisation ratios (subsequent actual expenditure divided by expected expenditure) then indicates how much expenditure was actually incurred against the amount expected to be incurred at various times of reporting.

Realisation ratios provide an important tool in understanding and interpreting statistics for future periods. The application of realisation ratios enables the adjustment of expectation data for known under (or over) realisation patterns in the past and hence provides a valid basis for comparison with other expectation data and actual expenditure estimates.

The following table shows the average realisation ratios over the past 4 years for the composite estimate (6 months actual and 6 months expected) and the 12 month expectation from the December quarter surveys.

**RATIOS OF ACTUAL PRIVATE NEW CAPITAL EXPENDITURE TO EXPECTED PRIVATE NEW  
CAPITAL EXPENDITURE BY SELECTED INDUSTRY AND TYPE OF ASSET - 4 YEAR  
AVERAGES  
SOUTH AUSTRALIA**

<i>Selected industries and type of asset</i>	<i>Composite estimate</i>	<i>12 month expectation</i>
Mining	0.88	1.18
Manufacturing	0.97	1.06
Other	0.98	1.58
<b>Total expenditure</b>	<b>0.96</b>	<b>1.25</b>
Buildings etc.	0.96	1.53
Equipment etc.	0.96	1.19

# STATISTICAL SUMMARY

Indicator	Period	SOUTH AUSTRALIA				AUSTRALIA				SA as a % of Australia	Source index
		No.	% change from		No.	% change from					
			Previous period	Same period previous year		Previous period	Same period previous year				
<b>State Accounts</b>											
Gross domestic product (I)											
Current prices	\$m	Mar. qtr 97	8,650	-12.4	1.9	124,332	-8.7	4.3	7.0	1	
1989-90 prices trend	\$m	Mar. qtr 97	7,700	0.4	1.0	112,956	1.1	3.6	6.8	1	
Wages, salaries and supplements											
Current prices trend	\$m	Mar. qtr 97	4,477	1.1	2.9	64,444	1.4	6.6	6.9	1	
Private final consumption expenditure											
Current prices	\$m	Mar. qtr 97	5,639	-7.8	2.8	75,903	-7.6	3.6	7.4	1	
1989-90 prices trend	\$m	Mar. qtr 97	4,944	0.3	1.2	66,873	0.6	2.3	7.4	1	
Private gross fixed capital expenditure											
1989-90 prices trend	\$m	Mar. qtr 97	1,142	1.8	24.1	20,771	2.1	10.6	5.5	1	
<b>International Accounts</b>											
Exports (excluding re-exports)	\$m	Jun. 97	405.6	10.7	15.3	6,448.9	-11.6	7.9	6.3	2	
Imports	\$m	Jun. 97	285.5	16.1	9.2	6,846.4	6.1	17.5	4.2	2	
<b>Consumption and Investment</b>											
Retail Turnover											
Current prices original	\$m	Jun. 97	717.0	-7.5	-1.5	9,787.3	-6.8	1.1	7.3	3	
Current prices trend	\$m	Jun. 97	774.5	0.3	0.0	10,477.5	0.1	2.2	7.4	3	
1989-90 prices original	\$m	Jun. qtr 97	1,851.5	3.4	-1.4	25,148.6	2.4	1.0	7.4	3	
New motor vehicle registrations											
Original	No.	May 97	4,439	22.0	12.9	67,677	15.4	6.3	6.6	4	
Trend	No.	Jun. 97	3,900	0.5	9.1	59,248	1.1	10.1	6.6	4	
Private new capital expenditure											
Current prices original	\$m	Mar. qtr 97	496	-24.8	28.8	9,698	-15.3	11.7	5.1	6	
Current prices trend	\$m	Mar. qtr 97	574	-5.7	22.9	10,649	-0.2	7.8	5.4	6	
Private new capital expenditure	\$m	1995-96	1,804	..	-14.3	38,601	..	12.5	4.7	6	
Takings, licensed hotels, motels and guesthouses with facilities	\$m	Mar. qtr 97	43.0	-0.5	2.6	923.4	-2.4	5.7	4.7	5	
<b>Production</b>											
Dwelling unit approvals											
Original	No.	Jun. 97	597	-3.7	36.9	11,643	-14.6	19.3	5.1	7	
Trend	No.	Jun. 97	618	2.3	32.9	12,053	-0.3	14.7	5.1	7	
New dwelling units commenced	No.	Mar. qtr 97	1,178	-23.0	-9.0	29,540	-7.3	2.5	4.0	8a	
Value of non-residential building approvals	\$m	Jun. 97	92.0	42.2	242.0	1,073.5	16.1	26.3	8.6	7	
Value of total building activity											
Commenced	\$m	Mar. qtr 97	240.7	-14.3	-13.5	6,474.4	-10.7	-1.4	3.7	8	
Work done	\$m	Mar. qtr 97	282.3	-18.9	3.8	6,658.3	-9.2	11.5	4.2	8	
Work yet to be done	\$m	Mar. qtr 97	318.1	-8.8	-1.1	9,915.7	3.5	8.7	3.2	8	
Value of engineering construction work done	\$m	Mar. qtr 97	187.6	0.9	-3.9	3,318.7	-14.1	-2.9	5.7	9	
Manufacturing production											
Electricity (SA and NT)	mill. kWh	Jun. 97	806	-5.2	2.3	14,938	3.2	4.0	5.4	10	
Cheese	tonnes	Apr. 97	2,255	18.0	3.7	20,552	-7.0	3.8	11.0	10	
Red meat	tonnes	Jun. 97	17,035	-8.5	29.4	230,230	-10.9	11.2	7.4	11	
Mineral exploration expenditure (other than for petroleum)	\$m	Mar. qtr 97	7.2	-10.0	41.2	237.8	-18.4	8.6	3.0	12	

Indicator	Period	SOUTH AUSTRALIA				AUSTRALIA				SA as a % of Australia	Source Index
		No.	% change from		No.	% change from					
			Previous period	Same period previous year		Previous period	Same period previous year				
<b>Prices</b>											
CPI - All groups	1989-90=100	Jun. qtr 97	121.9	-0.6	-0.1	120.2	-0.2	0.3	..	13	
Price index of materials used in house building	1989-90=100	Jun. 97	121.8	0.3	3.0	117.1	0.1	1.4	..	14	
Price index of materials used in building other than houses	1989-90=100	Jun. 97	114.7	0.0	1.6	114.0	0.2	1.2	..	15	
Price index of established houses	1989-90=100	Mar. qtr 97	109.3	2.4	1.5	115.3	0.9	2.8	..	16	
Price index of project homes	1989-90=100	Mar. qtr 97	107.7	0.4	-4.8	109.2	0.1	-0.3	..	16	
<b>Labour Force and Demography</b>											
Population (resident at end qtr)	'000	Dec. qtr 96	1,476.8	0.1	0.4	18,426.9	0.3	1.3	8.0	17	
Short-term overseas visitors arrivals	No.	May 97	4,591	-25.6	-16.5	289,098	-11.3	10.5	1.6	21	
Short-term resident departures	No.	May 97	5,515	-55.3	-51.4	305,384	43.6	41.4	1.8	21	
<b>Labour force</b>											
Original	'000	Jul. 97	730.8	-0.6	0.5	9,230.0	0.7	1.3	7.9	18	
Trend	'000	Jul. 97	734.2	0.0	0.8	9,193.2	0.0	0.7	8.0	18	
<b>Employed persons</b>											
Original	'000	Jul. 97	662.8	-0.6	-0.1	8,452.1	0.4	0.9	7.8	18	
Trend	'000	Jul. 97	662.0	0.0	0.3	8,397.7	0.0	0.6	7.9	18	
<b>Participation rate</b>											
Original (a)	%	Jul. 97	61.7	-0.4	-0.1	63.1	0.1	-0.3	..	18	
Trend (a)	%	Jul. 97	62.0	0.0	0.1	63.1	-0.1	-0.5	..	18	
<b>Unemployment rate</b>											
Original (a)	%	Jul. 97	9.3	0.0	0.5	8.2	0.0	0.2	..	18	
Trend (a)	%	Jul. 97	9.8	0.0	0.4	8.7	0.0	0.1	..	18	
Job vacancies	'000	May 97	3.0	-18.9	25.0	58.1	-7.2	8.4	5.2	19	
Average weekly overtime per employee working overtime	hours	May 97	6.8	3.3	3.0	7.0	-0.6	-3.6	..	19	
Industrial disputes	'000 working days lost	May 97	1.6	700.0	-84.9	65.2	90.1	-60.4	2.5	20	
<b>Incomes</b>											
<b>Average weekly earnings (full-time adults; ordinary time)</b>											
Original	\$	May 97	655.70	0.9	3.5	696.60	0.4	3.6	..	22	
Trend	\$	May 97	656.20	1.2	4.0	696.70	0.7	3.8	..	22	
Award rates of pay index (full-time adults, weekly)	Jun.1985=100	Jun. 97	151.8	0.4	1.4	149.2	0.2	1.4	..	23	
<b>Financial markets</b>											
Secured housing finance	\$m	Jun. 97	265.2	-5.0	10.6	4,582.7	-5.0	20.0	5.8	24	
<b>Finance commitments</b>											
Personal	\$m	Jun. 97	274.4	9.0	52.4	3,437.0	5.8	22.0	8.0	25	
Commercial	\$m	Jun. 97	497.9	-11.3	-20.7	15,376.3	-11.6	5.7	3.2	25	
Lease	\$m	Jun. 97	30.6	47.6	-2.1	920.7	40.9	0.7	3.3	25	
<b>Interest rates</b>											
Banks new housing loans (a)	%	Jul. 97	..	..	..	7.20	0.0	-2.6	..	26	
<b>Banks business loans (a)</b>											
small, medium sized business	%	Jul. 97	..	..	..	9.25	-0.3	-2.0	..	26	
large business	%	Jul. 97	..	..	..	8.95	-0.1	-1.9	..	26	

(a) Change is shown in terms of percentage points.

# TIME SERIES

## STATE ACCOUNTS AT CURRENT PRICES South Australia

Period	Final consumption expenditure		Gross fixed capital expenditure		State final demand	Gross State product (f)	Wages, salaries and supplements
	Private	Public	Private	Public			
ANNUAL (\$ million)							
1986-87	12,470	4,203	3,255	1,287	21,215	20,609	10,602
1987-88	13,748	4,392	3,964	1,196	23,300	22,828	11,230
1988-89	15,248	4,649	4,151	1,429	25,477	25,526	12,546
1989-90	16,474	5,003	4,488	1,577	27,542	27,969	13,954
1990-91	18,122	5,477	4,234	1,529	29,362	28,429	14,746
1991-92	18,958	5,812	4,021	1,429	30,220	28,719	14,718
1992-93	19,493	5,969	3,980	1,372	30,814	29,989	15,131
1993-94	20,464	6,678	4,007	1,191	32,340	31,970	16,243
1994-95	21,653	6,772	4,849	1,223	34,497	33,399	16,607
1995-96	22,875	6,818	4,083	1,068	34,844	35,474	17,318
PERCENTAGE CHANGE FROM PREVIOUS YEAR							
1987-88	10.2	4.5	21.8	-7.1	9.8	10.8	5.9
1988-89	10.9	5.9	4.7	19.5	9.3	11.8	11.7
1989-90	8.0	7.6	8.1	10.4	8.1	9.6	11.2
1990-91	10.0	9.5	-5.7	-3.0	6.6	1.6	5.7
1991-92	4.6	6.1	-5.0	-6.5	2.9	1.0	-0.2
1992-93	2.8	2.7	-1.0	-4.0	2.0	4.4	2.8
1993-94	5.0	11.9	0.7	-13.2	5.0	6.6	7.3
1994-95	5.8	1.4	21.0	2.7	6.7	4.5	2.2
1995-96	5.6	0.7	-15.8	-12.7	1.0	6.2	4.3
QUARTERLY, ORIGINAL (\$ million)							
1993 - 94 - June	5,085	1,923	1,038	390	8,436	8,029	4,195
1994 - 95 - September	5,243	1,652	1,146	243	8,284	8,167	4,151
December	5,642	1,696	1,531	294	9,163	8,802	4,108
March	5,263	1,559	1,064	318	8,204	8,088	4,087
June	5,505	1,865	1,108	368	8,846	8,342	4,261
1995 - 96 - September	5,636	1,749	927	216	8,528	8,321	4,223
December	6,050	1,718	1,197	245	9,210	9,926	4,475
March	5,487	1,624	887	275	8,273	8,489	4,226
June	5,702	1,727	1,072	332	8,833	8,738	4,394
1996 - 97 - September	5,764	1,684	1,123	220	8,791	8,456	4,346
December	6,118	1,738	1,247	245	9,348	9,878	4,519
March	5,639	1,608	1,081	278	8,606	8,650	4,345
QUARTERLY, TREND (\$ million)							
1993 - 94 - June	5,192	1,708	1,074	290	8,264	8,172	4,108
1994 - 95 - September	5,250	1,708	1,206	305	8,469	8,255	4,112
December	5,352	1,687	1,272	318	8,629	8,289	4,118
March	5,476	1,688	1,206	310	8,680	8,353	4,153
June	5,592	1,723	1,089	288	8,692	8,502	4,220
1995 - 96 - September	5,665	1,746	1,018	277	8,706	8,709	4,289
December	5,702	1,735	1,006	276	8,719	8,868	4,328
March	5,729	1,699	1,020	274	8,722	8,917	4,352
June	5,749	1,681	1,066	265	8,761	8,892	4,356
1996 - 97 - September	5,779	1,687	1,117	268	8,851	8,902	4,379
December	5,820	1,707	1,157	282	8,966	8,963	4,427
March	5,864	1,727	1,161	296	9,048	9,032	4,477
PERCENTAGE CHANGE FROM PREVIOUS QUARTER, TREND							
1994 - 95 - September	1.1	0.0	12.3	5.2	2.5	1.0	0.1
December	1.9	-1.2	5.5	4.3	1.9	0.4	0.1
March	2.3	0.1	-5.2	-2.5	0.6	0.8	0.8
June	2.1	2.1	-9.7	-7.1	0.1	1.8	1.6
1995 - 96 - September	1.3	1.3	-6.5	-3.8	0.2	2.4	1.6
December	0.7	-0.6	-1.2	-0.4	0.1	1.8	0.9
March	0.5	-2.1	1.4	-0.7	0.0	0.6	0.6
June	0.3	-1.1	4.5	-3.3	0.4	-0.3	0.1
1996 - 97 - September	0.5	0.4	4.8	1.1	1.0	0.1	0.5
December	0.7	1.2	3.6	5.2	1.3	0.7	1.1
March	0.8	1.2	0.3	5.0	0.9	0.8	1.1

**STATE ACCOUNTS AT AVERAGE 1989-90 PRICES**  
**South Australia**

Period	Final consumption expenditure		Gross fixed capital expenditure		State final demand	Gross State product (I)
	Private	Public	Private	Public		
ANNUAL (\$ million)						
1986-87	14,958	4,850	3,621	1,442	24,871	25,260
1987-88	15,451	4,877	4,247	1,304	25,879	25,959
1988-89	16,084	4,879	4,279	1,500	26,742	26,720
1989-90	16,474	5,003	4,488	1,577	27,542	27,969
1990-91	17,169	5,210	4,093	1,480	27,592	27,697
1991-92	17,447	5,328	3,849	1,364	27,988	27,023
1992-93	17,491	5,358	3,696	1,292	27,837	28,077
1993-94	18,063	5,698	3,644	1,135	28,540	29,004
1994-95	18,838	5,830	4,415	1,156	30,239	29,064
1995-96	19,528	5,771	3,680	1,004	29,983	30,331
PERCENTAGE CHANGE FROM PREVIOUS YEAR						
1987-88	3.3	0.6	17.3	-9.6	4.1	2.8
1988-89	4.1	0.0	0.8	15.0	3.3	2.9
1989-90	2.4	2.5	4.9	5.1	3.0	4.7
1990-91	4.2	4.1	-8.8	-6.2	0.2	-1.0
1991-92	1.6	2.3	-6.0	-7.8	1.4	-2.4
1992-93	0.3	0.6	-4.0	-5.3	-0.5	3.9
1993-94	3.3	6.3	-1.4	-12.2	2.5	3.3
1994-95	4.3	2.3	21.2	1.9	6.0	0.2
1995-96	3.7	-1.0	-16.6	-13.1	-0.8	4.4
QUARTERLY, ORIGINAL (\$ million)						
June 1994 - 95 -	4,470	1,596	938	373	7,377	7,093
September	4,593	1,422	1,042	232	7,289	7,133
December	4,927	1,444	1,425	281	8,077	7,782
March	4,560	1,368	954	298	7,180	6,948
June 1995 - 96 -	4,758	1,596	994	345	7,693	7,204
September	4,832	1,485	839	205	7,361	7,149
December	5,169	1,463	1,056	230	7,918	8,520
March	4,669	1,381	806	257	7,113	7,243
June 1996 - 97 -	4,858	1,442	979	312	7,591	7,405
September	4,894	1,421	1,080	206	7,601	7,252
December	5,176	1,440	1,212	229	8,057	8,657
March	4,749	1,352	1,057	258	7,416	7,306
QUARTERLY, TREND (\$ million)						
1994 - 95 -						
September	4,603	1,454	1,103	290	7,450	7,239
December	4,670	1,451	1,164	300	7,585	7,204
March	4,756	1,464	1,096	293	7,609	7,237
June 1995 - 96 -	4,829	1,483	979	272	7,563	7,342
September	4,866	1,490	908	262	7,526	7,493
December	4,876	1,468	896	260	7,500	7,598
March	4,885	1,429	920	257	7,491	7,626
June 1996 - 97 -	4,897	1,408	989	248	7,542	7,627
September	4,911	1,412	1,065	250	7,638	7,642
December	4,928	1,431	1,122	263	7,744	7,672
March	4,944	1,444	1,142	276	7,806	7,700
PERCENTAGE CHANGE FROM PREVIOUS QUARTER, TREND						
1994 - 95 -						
December	1.5	-0.2	5.5	3.4	1.8	-0.5
March	1.8	0.9	-5.8	-2.3	0.3	0.5
June	1.5	1.3	-10.7	-7.2	-0.6	1.5
1995 - 96 -						
September	0.8	0.5	-7.3	-3.7	-0.5	2.1
December	0.2	-1.5	-1.3	-0.8	-0.3	1.4
March	0.2	-2.7	2.7	-1.2	-0.1	0.4
June	0.2	-1.5	7.5	-3.5	0.7	0.0
1996 - 97 -						
September	0.3	0.3	7.7	0.8	1.3	0.2
December	0.3	1.3	5.4	5.2	1.4	0.4
March	0.3	0.9	1.8	4.9	0.8	0.4

**MERCHANDISE EXPORTS BY SELECTED COMMODITY GROUP**  
**Final stage of production in South Australia**  
**(\$'000)**

Period	Meat and meat preparations	Cereals and cereal preparations	Wine	Wool and sheepskins	Machinery	Metals and metal manufactures	Fish and crustaceans	Road vehicles, parts and accessories	Petroleum and petroleum products	Total
1988-89	181,058	475,481	71,474	415,098	104,163	239,656	95,720	124,815	189,679	2,451,372
1989-90	244,374	724,369	73,484	285,650	111,944	371,136	111,760	161,704	188,105	2,828,091
1990-91	234,299	587,199	123,567	257,576	152,940	433,341	122,604	117,218	291,507	3,007,137
1991-92	270,237	565,582	165,914	351,096	176,536	489,030	147,532	137,091	341,477	3,431,139
1992-93	282,181	573,375	192,255	318,989	211,426	490,594	154,608	338,359	372,445	3,760,602
1993-94	324,796	436,517	238,366	290,963	223,760	462,355	186,861	351,229	276,473	3,889,783
1994-95	307,785	261,052	250,527	301,645	285,309	571,094	191,386	332,321	285,310	3,829,336
1995-96	244,508	713,092	318,534	240,148	340,205	610,899	196,629	249,237	220,915	4,498,532
1996-97	182,279	745,077	397,753	259,758	377,810	543,060	191,686	655,378	287,164	5,009,297
MONTHLY										
1995 - 96 -										
April	19,866	65,951	28,161	20,765	29,838	35,488	11,760	21,089	37,852	364,547
May	17,268	98,946	25,965	18,651	30,253	56,133	14,305	20,508	18,602	400,552
June	13,508	32,283	35,428	21,076	30,702	53,314	11,403	18,201	12,412	351,664
1996 - 97 -										
July	11,235	58,143	28,756	17,046	28,499	37,616	10,316	44,328	25,877	364,816
August	9,355	43,399	41,848	12,545	33,395	53,358	10,441	23,287	19,738	353,971
September	10,417	43,137	38,598	16,764	31,939	35,430	10,554	36,844	6,262	315,945
October	14,922	44,586	40,663	22,285	26,217	46,325	16,063	75,999	20,187	425,410
November	18,388	23,261	25,814	22,961	32,122	46,400	16,170	99,763	41,799	443,477
December	21,065	85,121	34,865	30,635	45,320	60,849	16,009	70,076	17,719	521,387
January	13,701	108,010	21,366	18,392	17,653	33,405	20,477	46,808	4,275	379,276
February	17,065	124,928	30,844	22,350	27,115	39,512	20,942	58,234	46,014	510,685
March	17,492	118,002	34,185	22,682	39,617	46,769	23,664	58,579	25,712	507,083
April	17,382	61,513	34,047	25,234	31,992	39,746	19,828	45,173	26,197	415,332
May	15,982	16,146	36,702	25,813	35,066	55,411	15,428	39,708	15,488	366,341
June	15,275	18,831	30,065	23,051	28,875	48,239	11,794	56,579	37,896	405,574

**MERCHANDISE EXPORTS BY SELECTED COUNTRIES**  
**Final stage of production in South Australia**  
**(\$'000)**

Period	European Community				New Zealand	East Asia				Total East Asia
	United States	Middle East	United Kingdom	European Community Total		Japan	China	Hong Kong	ASEAN	
ANNUAL										
1988-89	184,903	397,324	108,635	355,669	230,263	390,207	51,975	55,474	240,507	869,226
1989-90	229,169	551,953	121,319	412,855	289,970	359,643	86,303	49,273	277,659	929,209
1990-91	321,032	325,450	186,353	480,714	179,193	438,970	146,434	80,640	403,754	1,284,576
1991-92	300,139	381,761	220,048	550,258	214,522	647,674	148,308	108,583	437,670	1,627,108
1992-93	352,764	314,049	237,520	594,701	288,421	649,684	208,135	171,803	487,174	1,820,065
1993-94	393,611	280,499	263,092	571,047	311,999	625,481	220,211	165,163	533,977	1,898,975
1994-95	329,878	184,342	246,118	553,051	376,262	682,937	177,875	193,014	551,433	2,004,013
1995-96	279,555	525,348	287,727	691,996	376,628	672,885	293,360	202,307	572,529	2,057,945
1996-97	706,964	562,106	304,207	640,395	381,283	612,749	244,818	234,523	613,348	2,034,193
MONTHLY										
1995 - 96 -										
April	21,849	38,851	22,902	43,787	26,360	53,273	36,243	18,290	50,280	187,633
May	20,722	8,796	22,925	60,081	33,390	69,732	28,623	21,449	38,464	186,392
June	27,622	27,415	39,268	81,921	27,726	51,133	10,310	15,755	40,698	142,070
1996 - 97 -										
July	26,282	19,794	23,491	40,076	58,202	37,820	13,448	14,210	62,818	154,167
August	24,015	30,364	28,940	57,177	39,337	51,371	17,025	20,786	42,611	158,897
September	45,323	32,344	25,007	41,103	26,836	36,244	13,183	18,520	37,428	128,271
October	74,338	30,300	28,488	58,604	40,477	67,681	20,077	12,600	45,513	173,485
November	100,612	23,047	32,472	56,564	33,279	57,312	17,778	27,444	64,655	189,397
December	71,258	81,329	28,905	65,677	27,378	59,114	29,176	21,721	47,735	186,431
January	47,321	83,789	13,228	29,012	32,659	31,483	17,714	16,327	28,376	119,338
February	57,587	66,413	22,843	49,737	29,724	56,641	27,861	23,395	74,529	208,956
March	69,002	96,254	26,863	67,132	28,246	59,413	22,364	26,579	39,848	182,081
April	59,320	48,183	26,011	52,607	22,882	50,968	33,261	18,598	61,195	185,979
May	49,270	30,748	26,397	63,012	21,129	46,956	17,452	16,290	50,432	166,074
June	82,636	19,541	21,562	59,694	21,134	57,746	15,479	18,053	58,208	181,117

**MERCHANDISE EXPORTS BY INDUSTRY OF ORIGIN**  
**Final stage of production in South Australia**  
**(\$'000)**

Period	Manufacturing								Total
	Agriculture, forestry and fishing	Mining	Food, beverages and tobacco	Petroleum, coal, chemical associated product	Metal product	Machinery and equipment	Other manufacturing	Other industries/ confidential	
ANNUAL									
1988-89	891,978	107,269	515,739	176,037	260,978	270,215	96,203	132,953	2,451,372
1989-90	979,463	133,318	583,544	133,078	406,144	320,349	99,984	172,210	2,828,091
1990-91	804,154	120,930	599,030	264,813	474,541	336,500	155,351	251,818	3,007,137
1991-92	882,011	248,846	702,148	201,681	541,522	381,737	178,485	294,709	3,431,139
1992-93	883,725	294,586	766,518	195,387	509,303	641,930	178,726	290,427	3,760,602
1993-94	733,014	245,247	884,737	180,147	475,060	665,066	208,573	497,938	3,889,783
1994-95	592,129	268,537	886,337	186,661	584,838	711,529	243,314	355,991	3,829,336
1995-96	1,014,521	226,309	978,332	172,285	639,267	674,131	226,496	567,191	4,498,532
1996-97	1,065,875	216,160	980,705	280,545	570,500	1,138,366	228,374	528,768	5,009,297
MONTHLY									
1995 - 96 -									
April	94,201	28,555	74,853	16,617	38,555	57,027	18,305	36,435	364,547
May	105,017	23,538	84,935	18,645	59,240	59,403	17,912	31,862	400,552
June	61,544	11,060	77,812	11,624	58,738	55,922	18,726	56,238	351,664
1996 - 97 -									
July	90,390	27,283	64,583	17,238	37,653	80,451	18,424	28,794	364,816
August	58,417	21,111	87,452	16,123	54,535	65,002	19,604	31,727	353,971
September	63,746	2,163	81,493	13,729	36,910	77,121	19,503	21,279	315,945
October	68,176	12,456	85,814	28,892	51,440	111,387	20,149	47,095	425,410
November	58,151	21,794	71,302	28,399	47,286	140,287	19,269	56,989	443,477
December	119,511	25,596	87,420	25,499	63,810	122,789	22,225	54,537	521,387
January	133,106	1,294	72,585	10,035	33,508	69,642	15,632	43,473	379,276
February	150,997	39,021	86,454	33,856	43,358	93,023	18,491	45,485	510,685
March	140,265	734	97,809	33,483	50,142	106,475	18,809	59,366	507,083
April	87,756	30,741	85,858	17,247	40,559	96,245	19,110	37,816	415,332
May	42,219	950	84,866	27,055	59,576	84,630	20,286	46,758	366,341
June	53,141	33,017	75,069	28,989	51,723	91,314	16,872	55,449	405,574

**MERCHANDISE IMPORTS BY SELECTED COMMODITY GROUP**  
**Goods released from Customs control in South Australia**  
**(\$'000)**

Period	Food, beverages and tobacco	Petroleum and petroleum products	Chemicals	Textiles	Metals and metal manufactures	Machinery	Road vehicles, parts and accessories	Other manufactured goods	Total
ANNUAL									
1988-89	60,395	169,397	144,766	47,592	135,225	411,092	415,120	344,344	1,861,622
1989-90	71,796	203,654	167,154	49,249	147,969	462,885	414,800	399,437	2,050,024
1990-91	78,926	425,262	140,894	49,087	135,772	515,226	372,603	366,304	2,193,851
1991-92	82,095	362,777	153,574	62,884	151,165	523,848	435,121	513,012	2,396,954
1992-93	91,756	570,334	186,001	57,434	255,924	609,212	661,714	521,723	3,068,122
1993-94	99,177	404,626	200,225	60,172	160,937	595,238	663,617	484,590	2,803,446
1994-95	115,930	330,430	220,536	64,524	214,432	695,038	749,658	563,368	3,099,510
1995-96	118,237	346,397	254,102	76,847	213,487	675,869	546,445	728,096	3,114,309
1996-97	136,759	506,294	226,845	79,700	223,276	868,395	538,686	695,339	3,415,466
MONTHLY									
1995 - 96 -									
April	9,155	42,010	30,060	5,999	16,164	53,368	47,497	60,585	275,216
May	10,336	32,580	19,662	5,993	17,306	67,725	35,970	63,905	266,206
June	7,669	21,616	15,891	6,713	18,888	52,873	45,012	85,729	261,521
1996 - 97 -									
July	10,309	31,507	13,842	7,463	17,070	66,901	42,448	62,917	285,195
August	14,251	54,974	16,395	6,952	24,177	70,218	55,143	50,007	307,628
September	10,374	23,728	12,227	7,797	18,405	69,155	39,198	101,380	290,140
October	15,412	50,886	14,652	6,584	18,722	72,108	48,332	46,905	283,909
November	13,043	25,966	15,236	5,015	21,111	76,107	42,335	58,621	267,488
December	13,786	47,488	25,644	5,443	12,397	75,884	33,169	82,398	310,393
January	9,998	24,997	24,943	8,035	20,890	107,391	42,245	52,370	300,350
February	9,788	52,581	16,510	6,070	20,531	96,667	45,733	46,878	303,833
March	8,356	50,383	28,119	5,064	14,786	50,793	44,387	46,898	257,388
April	10,432	58,416	18,075	7,691	19,499	62,156	55,140	50,073	297,613
May	11,588	45,354	19,293	6,465	15,125	54,502	35,981	48,193	245,991
June	9,422	40,014	21,909	7,121	20,563	66,513	54,575	48,699	285,538

**TURNOVER OF RETAIL ESTABLISHMENTS BY INDUSTRY**  
**South Australia**

Period -	Food retailing	Department stores	Clothing and soft good retailing	Household good retailing	Recreational good retailing	Other retailing	Hospitality and services	Total
ANNUAL (\$ million)								
1987-88	2,378.5	951.2	416.7	660.8	237.5	367.0	941.6	5,953.3
1988-89	2,534.9	971.8	462.2	726.6	268.5	420.7	1,019.1	6,403.8
1989-90	2,679.8	1,041.1	521.1	782.5	291.6	467.1	1,046.7	6,829.9
1990-91	2,978.2	1,069.0	543.9	778.8	303.9	497.7	1,111.2	7,282.7
1991-92	3,163.1	1,087.4	466.5	792.0	278.7	515.7	1,157.3	7,460.7
1992-93	3,018.5	1,101.5	434.2	783.3	311.2	617.4	1,132.7	7,398.8
1993-94	3,152.3	1,107.8	466.1	849.2	354.9	639.6	1,260.5	7,830.4
1994-95	3,360.7	1,128.7	524.0	881.1	359.0	737.8	1,562.3	8,553.6
1995-96	3,676.0	1,138.6	535.0	944.6	407.0	845.1	1,676.3	9,222.6
1996-97	3,981.0	1,120.9	460.6	885.0	409.2	743.5	1,574.9	9,175.1
MONTHLY, ORIGINAL (\$ million)								
1995 - 96 -								
April	300.2	90.6	42.5	73.5	32.6	64.4	134.6	738.4
May	321.5	91.9	42.4	76.1	32.1	72.4	131.7	768.1
June	300.3	87.5	41.0	73.3	30.7	65.6	129.5	727.9
1996 - 97 -								
July	316.7	90.6	40.6	78.8	33.9	60.7	125.4	746.7
August	329.4	86.8	34.8	79.6	33.7	63.5	128.7	756.5
September	310.7	80.4	32.9	72.5	32.6	58.5	129.0	716.6
October	344.1	93.0	36.5	73.1	36.2	60.3	127.4	770.6
November	336.4	105.6	36.8	75.1	37.9	60.9	134.8	787.5
December	372.8	170.4	51.1	95.2	54.8	85.8	169.9	1,000.0
January	343.9	79.3	36.7	66.5	32.2	57.0	136.8	752.4
February	310.3	69.7	27.6	63.3	27.4	52.9	121.8	673.0
March	342.2	82.7	34.3	66.4	30.6	56.6	126.4	739.2
April	324.7	86.2	44.8	69.9	31.3	61.1	122.7	740.7
May	337.3	96.2	44.6	73.5	30.5	66.8	126.0	774.9
June	312.5	80.0	39.9	71.1	28.1	59.4	126.0	717.0
MONTHLY, TREND (\$ million)								
1995 - 96 -								
March	303.8	94.3	44.3	79.7	34.2	71.9	132.2	760.5
April	308.2	94.4	42.7	79.7	34.1	71.6	134.6	765.3
May	313.9	94.5	41.3	79.5	34.2	70.2	137.2	770.9
June	320.1	94.5	40.1	79.0	34.5	67.8	138.3	774.5
1996 - 97 -								
July	324.8	94.4	38.9	78.2	35.1	65.1	137.3	773.7
August	327.7	94.0	37.8	76.9	35.8	62.5	134.6	769.3
September	329.2	93.5	36.9	75.3	36.4	60.7	131.8	763.6
October	330.2	93.2	36.2	73.4	36.4	59.7	130.2	759.4
November	331.5	93.2	35.9	71.7	35.9	59.6	129.7	757.5
December	333.2	93.4	36.3	70.7	34.8	60.1	129.6	758.3
January	334.8	93.9	37.2	70.8	33.6	61.0	129.7	761.0
February	336.1	93.9	38.2	71.7	32.5	62.0	130.0	764.5
March	336.6	93.4	39.2	72.8	31.7	63.0	130.4	767.1
April	336.5	92.6	40.2	73.7	31.4	63.9	131.3	769.4
May	336.0	91.7	41.1	74.5	31.3	64.7	132.7	771.9
June	335.7	90.9	41.8	75.3	31.3	65.3	134.2	774.5
PERCENTAGE CHANGE FROM PREVIOUS MONTH, TREND								
1995 - 96 -								
April	1.4	0.1	-3.6	0.0	-0.3	-0.4	1.8	0.6
May	1.8	0.1	-3.3	-0.3	0.3	-2.0	1.9	0.7
June	2.0	0.0	-2.9	-0.6	0.9	-3.4	0.8	0.5
1996 - 97 -								
July	1.5	-0.1	-3.0	-1.0	1.7	-4.0	-0.7	-0.1
August	0.9	-0.4	-2.8	-1.7	2.0	-4.0	-2.0	-0.6
September	0.5	-0.5	-2.4	-2.1	1.7	-2.9	-2.1	-0.7
October	0.3	-0.3	-1.9	-2.5	0.0	-1.6	-1.2	-0.6
November	0.4	0.0	-0.8	-2.3	-1.4	-0.2	-0.4	-0.3
December	0.5	0.2	1.1	-1.4	-3.1	0.8	-0.1	0.1
January	0.5	0.5	2.5	0.1	-3.4	1.5	0.1	0.4
February	0.4	0.0	2.7	1.3	-3.3	1.6	0.2	0.5
March	0.1	-0.5	2.6	1.5	-2.5	1.6	0.3	0.3
April	0.0	-0.9	2.6	1.2	-0.9	1.4	0.7	0.3
May	-0.1	-1.0	2.2	1.1	-0.3	1.3	1.1	0.3
June	-0.1	-0.9	1.7	1.1	0.0	0.9	1.1	0.3



**NEW MOTOR VEHICLE REGISTRATIONS BY TYPE OF VEHICLE**  
**South Australia**

Period	Original			Seasonally adjusted			Trend estimate		
	Passenger vehicles	Other vehicles	Total	Passenger vehicles	Other vehicles	Total	Passenger vehicles	Other vehicles	Total
<b>ANNUAL</b>									
1987-88	29,915	5,775	35,690	..	..	..	..	..	..
1988-89	31,920	6,816	38,736						
1989-90	35,211	7,808	43,019						
1990-91	34,753	6,619	41,372						
1991-92	32,351	5,333	37,684						
1992-93	32,894	5,577	38,471						
1993-94	32,806	5,781	38,587						
1994-95	35,830	6,736	42,566						
1995-96	36,067	6,828	42,895						
1996-97	36,146	6,970	43,116						
<b>PERCENTAGE CHANGE FROM PREVIOUS YEAR</b>									
1988-89	6.7	18.0	8.5	..	..	..	..	..	..
1989-90	10.3	14.6	11.1						
1990-91	-1.3	-15.2	-3.8						
1991-92	-6.9	-19.4	-8.9						
1992-93	1.7	4.6	2.1						
1993-94	-0.3	3.7	0.3						
1994-95	9.2	16.5	10.3						
1995-96	0.7	1.4	0.8						
1996-97	0.2	2.1	0.5						
<b>MONTHLY</b>									
1995 - 96 -									
March	3,271	596	3,867	3,198	544	3,741	3,116	609	3,725
April	2,745	541	3,286	3,111	627	3,738	3,090	619	3,709
May	3,080	712	3,792	2,991	630	3,621	3,037	622	3,658
June	3,091	841	3,932	2,999	669	3,668	2,959	617	3,576
1996 - 97 -									
July	2,862	595	3,457	2,813	572	3,384	2,875	604	3,479
August	3,024	545	3,569	2,853	600	3,453	2,804	585	3,389
September	2,939	498	3,437	2,883	548	3,431	2,780	564	3,344
October	2,817	548	3,365	2,520	557	3,077	2,810	547	3,357
November	2,976	539	3,515	2,953	503	3,456	2,892	545	3,437
December	2,997	585	3,582	2,978	585	3,563	2,998	556	3,554
January	2,493	449	2,942	3,109	564	3,673	3,098	576	3,674
February	3,302	525	3,827	3,439	573	4,012	3,172	596	3,769
March	3,034	593	3,627	3,128	623	3,750	3,216	611	3,828
April	3,015	701	3,716	3,221	714	3,935	3,241	620	3,861
May	3,028	612	3,640	3,045	555	3,600	3,259	623	3,882
June	3,659	780	4,439	3,463	602	4,066	3,281	619	3,900
<b>PERCENTAGE CHANGE FROM PREVIOUS MONTH</b>									
1995 - 96 -									
April	-16.1	-9.2	-15.0	-2.7	15.3	-0.1	-0.8	1.6	-0.4
May	12.2	31.6	15.4	-3.9	0.5	-3.1	-1.7	0.5	-1.4
June	0.4	18.1	3.7	0.3	6.2	1.3	-2.6	-0.8	-2.2
1996 - 97 -									
July	-7.4	-29.3	-12.1	-6.2	-14.5	-7.7	-2.8	-2.1	-2.7
August	5.7	-8.4	3.2	1.4	4.9	2.0	-2.5	-3.1	-2.6
September	-2.8	-8.6	-3.7	1.1	-8.7	-0.6	-0.9	-3.6	-1.3
October	-4.2	10.0	-2.1	-12.6	1.6	-10.3	1.1	-3.0	0.4
November	5.6	-1.6	4.5	17.2	-9.7	12.3	2.9	-0.4	2.4
December	0.7	8.5	1.9	0.8	16.3	3.1	3.7	2.0	3.4
January	-16.8	-23.2	-17.9	4.4	-3.6	3.1	3.3	3.6	3.4
February	32.5	16.9	30.1	10.6	1.6	9.2	2.4	3.5	2.6
March	-8.1	13.0	-5.2	-9.0	8.7	-6.5	1.4	2.5	1.6
April	-0.6	18.2	2.5	3.0	14.6	4.9	0.8	1.5	0.9
May	0.4	-12.7	-2.0	-5.5	-22.3	-8.5	0.6	0.5	0.5
June	20.8	27.5	22.0	13.7	8.5	12.9	0.7	-0.6	0.5

**ACTUAL PRIVATE NEW CAPITAL EXPENDITURE BY SELECTED INDUSTRY AND TYPE OF ASSET  
South Australia**

Period	Industry			Total	Type of asset		
	Mining	Manufacturing	Other selected industries		New buildings and structures	Equipment, plant and machinery	
ANNUAL (\$ million)							
1990-91	122	742	988	1,852	628	1,224	
1991-92	193	763	668	1,625	392	1,233	
1992-93	218	564	739	1,522	416	1,105	
1993-94	97	613	773	1,484	356	1,128	
1994-95	115	829	1,162	2,106	351	1,755	
1995-96	194	716	893	1,804	348	1,456	
PERCENTAGE CHANGE FROM PREVIOUS YEAR							
1991-92	58.4	2.9	-32.3	-12.2	-37.5	0.8	
1992-93	12.8	-26.1	10.6	-6.4	6.1	-10.4	
1993-94	-55.5	8.7	4.6	-2.5	-14.5	2.0	
1994-95	18.3	35.2	50.3	41.9	-1.4	55.6	
1995-96	68.7	-13.6	-23.1	-14.3	-0.9	-17.0	
QUARTERLY, ORIGINAL (\$ million)							
1994 - 95 - March	22	202	222	446	65	382	
June	40	272	183	494	58	436	
1995 - 96 - September	35	155	172	361	71	290	
December	49	205	285	538	89	450	
March	51	159	174	385	76	309	
June	59	197	263	519	113	406	
1996 - 97 - September	61	183	386	630	129	501	
December	80	226	354	660	165	495	
March	77	188	230	496	125	371	
PERCENTAGE CHANGE FROM PREVIOUS QUARTER, ORIGINAL							
1994 - 95 - June	86.0	34.4	-17.7	10.8	-9.6	14.3	
1995 - 96 - September	-12.5	-43.0	-6.0	-27.0	21.6	-33.5	
December	40.0	32.3	65.7	49.0	25.4	55.3	
March	4.1	-22.4	-38.9	-28.4	-14.6	-31.3	
June	15.7	23.9	51.1	34.8	48.7	31.4	
1996 - 97 - September	3.4	-7.1	46.8	21.4	14.2	23.4	
December	31.1	23.5	-8.3	4.8	27.9	-1.2	
March	-3.8	-16.8	-35.0	-24.8	-24.2	-25.1	
QUARTERLY, TREND (\$ million)							
1994 - 95 - March	n.a.	n.a.	n.a.	523	71	452	
June				466	64	402	
1995 - 96 - September				433	68	365	
December				423	78	345	
March				467	94	373	
June				551	116	435	
1996 - 97 - September				606	132	474	
December				609	138	470	
March				574	136	438	
PERCENTAGE CHANGE FROM PREVIOUS QUARTER, TREND							
1994 - 95 - June	..	..	..	-10.9	-9.9	-11.1	
1995 - 96 - September				-7.1	6.3	-9.2	
December				-2.3	14.7	-5.5	
March				10.4	20.5	8.1	
June				18.0	23.4	16.6	
1996 - 97 - September				10.0	13.8	9.0	
December				0.5	4.5	-0.8	
March				-5.7	-1.4	-6.8	

**TOURIST ACCOMMODATION**  
**South Australia**

Period	Hotels, motels, guesthouses with facilities			Holiday flats, units and houses			Short-term caravan parks		
	Number of guest rooms	Room occupancy (per cent)	Takings (\$'000)	Number of flats, units and houses	Unit occupancy (per cent)	Takings (\$'000)	Number of sites	Site occupancy (per cent)	Takings (\$'000)
ANNUAL									
1986-87	8,497	52.9	79,254	n.a.	n.a.	n.a.	18,773	18.1	12,647
1987-88	9,156	50.8	89,321	1,105	45.4	8,109	18,926	17.8	13,248
1988-89	9,396	50.5	102,737	1,171	45.8	9,792	19,195	17.4	14,711
1989-90	10,316	52.0	121,788	1,113	48.4	11,381	19,847	18.4	17,174
1990-91	10,445	48.0	128,634	1,210	43.9	10,339	19,794	17.7	18,102
1991-92	10,745	46.6	130,578	1,302	40.4	10,492	20,601	17.1	19,111
1992-93	10,632	46.5	129,882	1,338	40.2	10,740	20,038	22.3	20,113
1993-94	10,597	48.6	138,782	1,338	40.9	11,700	19,591	23.7	20,790
1994-95	10,594	51.3	149,698	1,342	40.0	11,644	20,175	24.5	22,537
1995-96	10,772	52.4	161,136	1,356	41.5	12,844	20,187	24.9	23,578
PERCENTAGE CHANGE FROM PREVIOUS YEAR									
1987-88	7.8	..	12.7	n.a.	..	n.a.	0.8	..	4.8
1988-89	2.6	..	15.0	6.0	..	20.8	1.4	..	11.0
1989-90	9.8	..	18.5	-5.0	..	16.2	3.4	..	16.7
1990-91	1.3	..	5.6	8.7	..	-9.2	-0.3	..	5.4
1991-92	2.9	..	1.5	7.6	..	1.5	4.1	..	5.6
1992-93	-1.1	..	-0.5	2.8	..	2.4	-2.7	..	5.2
1993-94	-0.3	..	6.9	0.0	..	8.9	-2.2	..	3.4
1994-95	0.0	..	7.9	0.3	..	-0.5	3.0	..	8.4
1995-96	1.7	..	7.6	1.0	..	10.3	0.1	..	4.6
QUARTERLY									
1994 - 95 -									
December	10,608	53.0	41,265	1,360	40.0	3,000	20,126	24.5	5,681
March	10,603	53.4	37,897	1,337	50.1	3,776	20,132	28.4	7,047
June	10,605	50.0	35,802	1,346	35.9	2,451	20,452	24.3	5,597
1995 - 96 -									
September	10,703	50.3	37,077	1,289	32.4	2,273	20,350	22.3	4,809
December	10,763	52.9	42,999	1,297	40.3	3,120	20,123	24.5	6,103
March	10,757	55.1	41,938	1,388	54.9	4,512	20,154	27.8	6,931
June	10,865	51.4	39,121	1,451	38.0	2,940	20,122	25.0	5,736
1996 - 97 -									
September	10,879	48.9	37,567	1,426	35.1	2,885	20,247	21.0	4,735
December	10,951	54.9	43,266	1,470	40.7	3,651	20,260	25.2	6,340
March	10,909	55.4	43,033	1,493	54.1	4,895	20,251	30.4	7,742
PERCENTAGE CHANGE FROM PREVIOUS QUARTER									
1994 - 95 -									
March	0.0	..	-8.2	-1.7	..	25.9	0.0	..	24.0
June	0.0	..	-5.5	0.7	..	-35.1	1.6	..	-20.6
1995 - 96 -									
September	0.9	..	3.6	-4.2	..	-7.3	-0.5	..	-14.1
December	0.6	..	16.0	0.6	..	37.3	-1.1	..	26.9
March	-0.1	..	-2.5	7.0	..	44.6	0.2	..	13.6
June	1.0	..	-6.7	4.5	..	-34.8	-0.2	..	-17.2
1996 - 97 -									
September	0.1	..	-4.0	-1.7	..	-1.9	0.6	..	-17.5
December	0.7	..	15.2	3.1	..	26.6	0.1	..	33.9
March	-0.4	..	-0.5	1.6	..	34.1	0.0	..	22.1

**BUILDING APPROVALS**  
**South Australia**

Period	Number of dwelling units				Value (\$ million)			
	Houses		Total(a)		New residential building	Alterations and additions to residential building	Non-residential building	Total building
	Private sector	Total	Private sector	Total				
<b>ANNUAL</b>								
1988-89	7,526	8,006	9,642	11,238	690	109	895	1,694
1989-90	7,246	7,675	10,180	11,701	733	110	914	1,757
1990-91	8,351	8,633	10,418	11,426	755	119	591	1,465
1991-92	8,613	8,931	10,254	11,290	756	124	627	1,506
1992-93	9,710	10,087	11,548	12,341	841	133	418	1,392
1993-94	9,470	9,901	11,046	11,777	839	122	375	1,336
1994-95	7,757	8,147	9,208	9,762	740	120	493	1,353
1995-96	4,930	5,109	5,760	5,968	469	119	566	1,155
1996-97	5,508	5,604	6,148	6,264	515	117	584	1,217
<b>PERCENTAGE CHANGE FROM PREVIOUS YEAR</b>								
1989-90	-3.7	-4.1	5.6	4.1	6.1	1.2	2.1	3.7
1990-91	15.2	12.5	2.3	-2.4	3.1	8.6	-35.4	-16.6
1991-92	3.1	3.5	-1.6	-1.2	0.1	3.9	6.1	2.8
1992-93	12.7	12.9	12.6	9.3	11.3	7.1	-33.2	-7.6
1993-94	-2.5	-1.8	-4.3	-4.6	-0.2	-8.0	-10.4	-4.0
1994-95	-18.1	-17.7	-16.6	-17.1	-11.8	-1.7	31.5	1.3
1995-96	-36.4	-37.3	-37.4	-38.9	-36.5	-0.7	14.8	-14.7
1996-97	11.7	9.7	6.7	5.0	9.8	-2.1	3.2	5.4
<b>MONTHLY, ORIGINAL</b>								
1995 - 96 -								
February	393	418	461	486	39.6	8.4	16.5	64.5
March	388	393	432	437	36.5	11.4	49.9	97.8
April	380	386	424	430	31.9	8.5	27.5	67.9
May	464	483	486	505	40.8	10.0	143.6	194.3
June	403	406	433	436	34.3	10.5	26.9	71.8
1996 - 97 -								
July	476	481	523	528	42.8	7.7	41.9	92.5
August	484	492	536	547	45.2	10.3	60.9	116.4
September	458	462	510	514	43.4	10.7	59.1	113.2
October	401	414	553	566	43.7	12.0	28.5	84.2
November	438	438	488	488	39.9	8.8	39.7	88.5
December	382	383	409	410	34.8	9.7	28.0	72.5
January	340	340	351	351	29.6	8.6	41.9	80.1
February	429	434	467	472	39.7	9.8	53.1	102.6
March	486	501	526	543	41.8	8.9	35.4	86.1
April	559	568	615	628	52.6	10.9	39.2	102.8
May	537	551	599	620	52.5	9.9	64.7	127.1
June	518	540	571	597	49.5	9.2	92.0	150.7
<b>MONTHLY, TREND</b>								
1995 - 96 -								
April	407	417	449	459	n.a.	n.a.	n.a.	n.a.
May	412	419	451	459				
June	415	421	459	465				
1996 - 97 -								
July	418	425	469	477				
August	418	427	479	488				
September	417	427	482	493				
October	416	425	479	489				
November	420	428	474	482				
December	433	439	476	483				
January	455	459	489	495				
February	480	485	514	520				
March	503	509	542	551				
April	520	528	568	580				
May	531	541	588	604				
June	536	548	601	618				
<b>PERCENTAGE CHANGE FROM PREVIOUS MONTH, TREND</b>								
1995 - 96 -								
May	1.2	0.5	0.4	0.0				
June	0.7	0.5	1.8	1.3				
1996 - 97 -								
July	0.7	1.0	2.2	2.6				
August	0.0	0.5	2.1	2.3				
September	-0.2	0.0	0.6	1.0				
October	-0.2	-0.5	-0.6	-0.8				
November	1.0	0.7	-1.0	-1.4				
December	3.1	2.6	0.4	0.2				
January	5.1	4.6	2.7	2.5				
February	5.5	5.7	5.1	5.1				
March	4.8	4.9	5.4	6.0				
April	3.4	3.7	4.8	5.3				
May	2.1	2.5	3.5	4.1				
June	0.9	1.3	2.2	2.3				

(a) Includes the number of self-contained dwelling units approved as part of the construction of non-residential building and alterations to existing buildings (including conversions to dwelling units).

**BUILDING COMMENCEMENTS  
South Australia**

Period	Number of new dwelling units				Value (\$ million)				
	Houses		Total (a)		New residential building	Alterations and additions to residential building	Non-residential building		Total building
	Private sector	Total	Private sector	Total			Private sector	Total	
<b>ANNUAL</b>									
1986-87	5,345	6,458	6,552	8,987	475.7	75.3	430.1	674.4	1,225.4
1987-88	5,664	6,388	6,723	8,510	472.9	92.2	527.2	718.8	1,283.8
1988-89	7,132	7,580	8,853	10,303	646.2	103.7	760.3	964.1	1,709.9
1989-90	6,734	7,174	9,421	10,988	718.2	111.6	669.6	934.2	1,763.9
1990-91	7,863	8,177	9,683	10,838	727.5	118.2	367.1	554.0	1,399.6
1991-92	8,036	8,344	9,635	10,700	727.2	125.1	344.5	607.8	1,460.1
1992-93	9,122	9,416	10,889	11,646	816.2	122.4	205.5	458.7	1,397.2
1993-94	9,159	9,590	10,712	11,501	845.3	126.5	209.9	373.0	1,344.8
1994-95	7,745	8,210	9,132	9,796	765.5	125.3	251.7	518.5	1,409.3
1995-96	4,836	5,070	5,692	5,961	496.5	121.7	452.8	631.8	1,250.0
<b>QUARTERLY</b>									
1994 - 95 -									
September	2,413	2,526	2,855	3,085	235.6	34.3	57.0	101.8	371.7
December	2,303	2,435	2,670	2,873	221.1	31.8	52.8	99.5	352.4
March	1,631	1,735	1,934	2,073	167.9	26.4	55.6	92.1	286.4
June	1,396	1,512	1,623	1,763	140.9	32.8	86.3	225.1	398.8
1995 - 96 -									
September	1,398	1,504	1,640	1,771	142.4	29.4	69.5	108.4	280.3
December	1,242	1,295	1,491	1,587	133.9	34.0	85.5	119.5	287.4
March	1,044	1,089	1,237	1,295	109.2	29.4	80.1	139.9	278.4
June	1,153	1,183	1,269	1,308	111.0	28.8	217.7	264.0	403.9
1996 - 97 -									
September	1,191	1,207	1,297	1,321	108.7	26.2	67.9	104.2	239.1
December	1,245	1,262	1,511	1,530	133.8	33.8	85.3	113.2	280.8
March	1,032	1,042	1,172	1,178	100.5	24.1	74.4	116.1	240.7

(a) Includes conversions.

**VALUE OF BUILDING WORK DONE DURING PERIOD  
South Australia**

Period	New residential building				Alterations and additions to residential buildings	Non-residential building		Total building	
	Houses		Total			Private sector	Total	Private sector	Total
	Private sector	Total	Private sector	Total					
<b>ANNUAL (\$ million)</b>									
1986-87	310.0	364.8	385.4	492.2	78.4	447.9	645.2	908.1	1,215.8
1987-88	343.8	381.1	391.4	467.7	88.2	551.8	811.2	1,027.0	1,367.1
1988-89	450.2	469.2	538.8	597.0	104.1	657.5	902.2	1,297.3	1,603.3
1989-90	493.8	518.9	657.4	724.9	116.3	743.2	988.6	1,514.0	1,829.8
1990-91	578.3	600.2	713.6	782.3	122.0	621.9	876.6	1,455.4	1,780.8
1991-92	591.5	607.5	693.4	748.5	125.1	310.3	484.1	1,127.5	1,357.6
1992-93	647.2	660.9	743.8	780.6	127.1	297.9	570.9	1,166.3	1,478.6
1993-94	719.1	746.4	828.9	876.3	132.0	217.7	462.1	1,177.2	1,470.4
1994-95	659.6	693.6	766.1	816.4	129.4	271.6	476.9	1,164.3	1,422.7
1995-96	441.4	460.5	512.9	534.8	130.6	311.4	542.1	953.2	1,207.5
<b>QUARTERLY (\$ million)</b>									
1994 - 95 -									
September	185.6	193.5	215.3	230.8	37.4	63.7	113.5	316.1	381.8
December	185.3	195.7	216.0	231.4	35.6	63.0	117.8	313.1	384.7
March	153.3	159.5	179.5	187.9	25.1	57.2	104.4	261.4	317.4
June	135.3	144.8	155.3	166.3	31.2	87.8	141.3	273.7	338.8
1995 - 96 -									
September	117.9	124.5	138.8	146.6	31.4	72.7	121.7	241.7	299.6
December	119.2	125.6	137.7	144.8	39.9	87.1	142.9	264.7	327.6
March	101.6	105.4	118.8	123.1	26.7	63.4	122.0	208.6	271.8
June	102.6	105.0	117.6	120.3	32.6	88.1	155.6	238.3	308.5
1996 - 97 -									
September	97.3	99.3	109.4	111.3	28.0	83.4	143.8	219.4	283.1
December	109.0	110.6	121.2	122.8	35.4	119.6	189.8	276.0	348.0
March	95.8	96.2	109.9	110.4	25.8	101.2	146.1	236.8	282.3

**PRODUCTION, SELECTED COMMODITIES**  
**South Australia**

Period	Footwear (pairs)	Gas (m megajoules)	Electricity (including NT) ('000 kWh)	Coal (tonnes)	Sawn timber(a) (m <sup>3</sup> )
ANNUAL					
1987-88	1,982,301	83,101	10,137,144	2,566,347	254,453
1988-89	2,062,085	86,546	10,588,647	2,674,215	292,335
1989-90	1,749,112	85,070	10,665,118	2,921,861	228,156
1990-91	1,837,602	73,265	8,878,357	2,441,040	240,193
1991-92	1,852,890	78,210	10,025,649	2,819,880	271,603
1992-93	1,406,178	83,000	10,226,734	2,753,610	317,096
1993-94	1,382,949	89,382	10,560,251	2,643,000	364,961
1994-95	1,430,417	86,123	10,051,056	2,554,560	392,349
1995-96	1,423,814	76,074	8,733,503	2,409,120	413,545
1996-97	1,572,621	76,495	9,166,719	2,633,820	n.y.a.
PERCENTAGE CHANGE FROM PREVIOUS YEAR					
1988-89	4.0	4.1	4.5	4.2	14.9
1989-90	-15.2	-1.7	0.7	9.3	-22.0
1990-91	5.1	-13.9	-16.8	-16.5	5.3
1991-92	0.8	6.7	12.9	15.5	13.1
1992-93	-24.1	6.1	2.0	-2.4	16.7
1993-94	-1.7	7.7	3.3	-4.0	15.1
1994-95	3.4	-3.6	-4.8	-3.3	7.5
1995-96	-0.5	-11.7	-13.1	-5.7	5.4
1996-97	10.5	0.6	5.0	9.3	n.y.a.
MONTHLY/QUARTERLY (b), ORIGINAL					
1995 - 96 -					
April	101,261	6,088	632,648	159,960	..
May	134,719	5,728	725,035	186,600	..
June	163,135	7,047	788,337	216,120	90,862
1996 - 97 -					
July	132,078	7,478	805,153	242,820	..
August	139,938	7,077	780,265	231,720	..
September	140,736	6,545	715,089	203,820	95,037
October	118,507	6,788	701,744	150,480	..
November	134,859	5,468	692,551	202,920	..
December	82,581	5,417	724,795	196,980	86,509
January	68,587	6,016	801,786	239,760	..
February	170,775	6,499	857,703	206,820	..
March	124,771	5,429	717,610	238,200	67,726
April	137,860	5,544	713,484	216,840	..
May	144,946	6,979	850,366	259,980	..
June	176,983	7,255	806,173	243,480	n.y.a.
PERCENTAGE CHANGE FROM PREVIOUS MONTH/QUARTER (b)					
1995 - 96 -					
May	33.0	-5.9	14.6	16.7	..
June	21.1	23.0	8.7	15.8	2.5
1996 - 97 -					
July	-19.0	6.1	2.1	12.4	..
August	6.0	-5.4	-3.1	-4.6	..
September	0.6	-7.5	-8.4	-12.0	4.6
October	-15.8	3.7	-1.9	-26.2	..
November	13.8	-19.4	-1.3	34.8	..
December	-38.8	-0.9	4.7	-2.9	-9.0
January	-16.9	11.1	10.6	21.7	..
February	149.0	8.0	7.0	-13.7	..
March	-26.9	-16.5	-16.3	15.2	-21.7
April	10.5	2.1	-0.6	-9.0	..
May	5.1	25.9	19.2	19.9	..
June	22.1	4.0	-5.2	-6.3	n.y.a.

(a) From Australian softwood logs only.

(b) Sawn timber production data available quarterly only.

**PRODUCTION, LIVESTOCK PRODUCTS AND SELECTED COMMODITIES**  
**South Australia**

Period	Chicken	Pigmeat	Beef	Mutton	Lamb	Cheese	Wheat flour, other than self-raising
<b>ANNUAL (tonnes)</b>							
1986-87	33,776	40,761	90,283	43,934	32,416	27,438	80,310
1987-88	34,907	36,671	91,701	45,562	34,335	25,497	91,325
1988-89	32,946	40,364	87,160	42,159	36,203	24,704	96,418
1989-90	35,248	40,815	99,699	50,939	38,052	22,774	88,503
1990-91	31,945	38,644	87,036	65,434	32,038	24,522	83,727
1991-92	36,978	34,538	90,661	72,578	29,941	23,494	81,065
1992-93	38,619	38,153	96,338	65,689	39,334	26,140	87,761
1993-94	40,671	38,394	94,395	71,354	45,190	26,674	84,683
1994-95	39,103	32,063	99,108	66,759	36,147	29,154	80,666
1995-96	37,691	31,695	89,704	55,600	37,735	31,496	97,425
1996-97	38,889	29,851	85,347	58,023	35,081	n.y.a.	90,449
<b>PERCENTAGE CHANGE FROM PREVIOUS YEAR</b>							
1987-88	3.3	-10.0	1.6	3.7	5.9	-7.1	13.7
1988-89	-5.6	10.1	-5.0	-7.5	5.4	-3.1	5.6
1989-90	7.0	1.1	14.4	20.8	5.1	-7.8	-8.2
1990-91	-9.4	-5.3	-12.7	28.5	-15.8	7.7	-5.4
1991-92	15.8	-10.6	4.2	10.9	-6.5	-4.2	-3.2
1992-93	4.4	10.5	6.3	-9.5	31.4	11.3	8.3
1993-94	5.3	0.6	-2.0	8.6	14.9	2.0	-3.5
1994-95	-3.9	-16.5	5.0	-6.4	-20.0	9.3	-4.7
1995-96	-3.6	-1.1	-9.5	-16.7	4.4	8.0	20.8
1996-97	3.2	-5.8	-4.9	4.4	-7.0	n.y.a.	-7.2
<b>MONTHLY (tonnes)</b>							
1995 - 96 -							
April	3,438	2,440	6,250	3,768	2,957	2,122	7,665
May	2,880	3,092	6,935	3,532	3,274	2,174	14,422
June	2,942	2,381	5,780	3,065	1,909	1,963	6,811
1996 - 97 -							
July	3,110	3,043	5,241	2,670	1,896	2,120	7,099
August	2,827	2,864	5,190	2,749	1,856	2,452	7,468
September	3,042	2,308	6,650	3,733	2,776	3,092	7,089
October	3,155	2,232	8,130	5,528	3,422	3,699	6,866
November	3,167	2,629	8,930	7,351	2,983	3,326	7,331
December	3,600	2,000	6,681	4,500	2,574	2,889	8,187
January	3,502	2,136	7,333	5,815	3,247	2,536	8,010
February	2,819	2,570	7,223	6,057	3,154	2,043	8,566
March	3,440	2,202	6,854	5,397	2,899	1,911	8,374
April	3,595	2,508	8,355	5,632	3,501	2,255	7,379
May	3,321	2,828	7,606	4,637	3,469	n.y.a.	6,983
June	3,310	2,530	7,165	3,955	3,304	n.y.a.	7,097
<b>PERCENTAGE CHANGE FROM PREVIOUS MONTH</b>							
1995 - 96 -							
May	-16.2	26.7	11.0	-6.3	10.7	2.5	88.2
June	2.2	-23.0	-16.7	-13.2	-41.7	-9.7	-52.8
1996 - 97 -							
July	5.7	27.8	-9.3	-12.9	-0.7	8.0	4.2
August	-9.1	-5.9	-1.0	3.0	-2.1	15.7	5.2
September	7.6	-19.4	28.1	35.8	49.6	26.1	-5.1
October	3.7	-3.3	22.3	48.1	23.3	19.6	-3.1
November	0.4	17.8	9.8	33.0	-12.8	-10.1	6.8
December	13.7	-23.9	-25.2	-38.8	-13.7	-13.1	11.7
January	-2.7	6.8	9.8	29.2	26.1	-12.2	-2.2
February	-19.5	20.3	-1.5	4.2	-2.9	-19.4	6.9
March	22.0	-14.3	-5.1	-10.9	-8.1	-6.5	-2.2
April	4.5	13.9	21.9	4.4	20.8	18.0	-11.9
May	-7.6	12.8	-9.0	-17.7	-0.9	n.y.a.	-5.4
June	-0.3	-10.5	-5.8	-14.7	-4.8	n.y.a.	1.6

## CONSUMER PRICE INDEX: BY GROUP

## Adelaide

Period	Food	Clothing	Housing	Household equipment and operation	Transport- ation	Tobacco and alcohol	Health and personal care	Recreation and education	All groups
ANNUAL AVERAGE (1989-90 = 100)									
1986-87	83.2	81.8	76.9	84.3	83.0	79.4	75.6	82.1	81.5
1987-88	87.6	88.2	79.5	89.9	88.6	85.7	84.0	89.6	87.0
1988-89	95.2	95.3	87.0	95.1	94.2	92.5	90.8	94.6	93.3
1989-90	100.0	100.0	100.0	100.0	100.0	100.0	100.0	100.0	100.0
1990-91	103.8	103.6	104.1	105.4	107.0	112.0	113.4	104.8	106.2
1991-92	106.0	105.3	100.4	107.5	110.5	118.6	127.8	107.7	108.9
1992-93	109.3	107.0	94.3	107.6	115.0	131.2	134.9	110.7	111.2
1993-94	111.7	106.6	92.1	108.0	117.8	141.5	142.7	113.7	113.4
1994-95	115.1	104.9	97.8	109.2	120.2	148.9	151.3	116.3	116.9
1995-96	118.2	105.1	103.6	112.1	124.5	160.1	158.9	118.0	121.2
1996-97	120.8	105.5	98.9	113.4	124.6	165.3	165.4	121.1	122.3
PERCENTAGE CHANGE FROM PREVIOUS YEAR, ANNUAL AVERAGE									
1987-88	5.3	7.8	3.4	6.6	6.7	7.9	11.1	9.1	6.7
1988-89	8.7	8.0	9.4	5.8	6.3	7.9	8.1	5.6	7.2
1989-90	5.0	4.9	14.9	5.2	6.2	8.1	10.1	5.7	7.2
1990-91	3.8	3.6	4.1	5.4	7.0	12.0	13.4	4.8	6.2
1991-92	2.1	1.6	-3.6	2.0	3.3	5.9	12.7	2.8	2.5
1992-93	3.1	1.6	-6.1	0.1	4.1	10.6	5.6	2.8	2.1
1993-94	2.2	-0.4	-2.3	0.4	2.4	7.9	5.8	2.7	2.0
1994-95	3.0	-1.6	6.2	1.1	2.0	5.2	6.0	2.2	3.1
1995-96	2.7	0.2	5.9	2.7	3.6	7.6	5.0	1.5	3.7
1996-97	2.2	0.3	-4.5	1.2	0.0	3.3	4.1	2.6	0.9
QUARTERLY (1989-90=100.0)									
1994 - 95 -									
December	114.3	105.1	95.6	108.7	119.8	147.8	148.7	116.2	116.0
March	115.7	104.2	100.8	109.5	119.9	150.2	153.0	117.2	117.8
June	115.7	105.1	102.2	110.2	121.4	153.2	155.3	116.5	118.8
1995 - 96 -									
September	117.8	104.8	102.7	111.5	124.4	154.8	155.4	116.5	120.1
December	118.2	105.2	103.8	112.0	124.3	159.7	158.7	117.3	121.1
March	118.2	104.9	103.9	112.4	123.9	162.2	161.0	118.9	121.6
June	118.4	105.5	103.9	112.3	125.3	163.6	160.6	119.2	122.0
1996 - 97 -									
September	119.2	105.5	103.5	113.0	124.4	164.7	160.9	119.2	122.2
December	120.7	106.0	100.5	113.8	125.5	164.9	164.9	119.8	122.6
March	121.2	105.1	97.5	113.3	125.6	165.2	167.7	122.3	122.6
June	121.9	105.2	94.1	113.6	122.7	166.5	168.0	122.9	121.9
PERCENTAGE CHANGE FROM SAME QUARTER OF PREVIOUS YEAR									
1994 - 95 -									
March	3.3	-1.7	10.0	1.5	2.0	5.3	5.2	2.7	3.7
June	2.4	-0.7	11.2	1.8	2.4	6.0	4.8	1.5	3.8
1995 - 96 -									
September	2.9	-0.4	11.1	3.0	4.0	7.4	4.8	1.2	4.5
December	3.4	0.1	8.6	3.0	3.8	8.1	6.7	0.9	4.4
March	2.2	0.7	3.1	2.6	3.3	8.0	5.2	1.5	3.2
June	2.3	0.4	1.7	1.9	3.2	6.8	3.4	2.3	2.7
1996-97									
September	1.2	0.7	0.8	1.3	0.0	6.4	3.5	2.3	1.7
December	2.1	0.8	-3.2	1.6	1.0	3.3	3.9	2.1	1.2
March	2.5	0.2	-6.2	0.8	1.4	1.8	4.2	2.9	0.8
June	3.0	-0.3	-9.4	1.2	-2.1	1.8	4.6	3.1	-0.1
PERCENTAGE CHANGE FROM PREVIOUS QUARTER									
1994 - 95 -									
March	1.2	-0.9	5.4	0.7	0.1	1.6	2.9	0.9	1.6
June	0.0	0.9	1.4	0.6	1.3	2.0	1.5	-0.6	0.8
1995 - 96 -									
September	1.8	-0.3	0.5	1.2	2.5	1.0	0.1	0.0	1.1
December	0.3	0.4	1.1	0.4	-0.1	3.2	2.1	0.7	0.8
March	0.0	-0.3	0.1	0.4	-0.3	1.6	1.4	1.4	0.4
June	0.2	0.6	0.0	-0.1	1.1	0.9	-0.2	0.3	0.3
1996-97									
September	0.7	0.0	-0.4	0.6	-0.7	0.7	0.2	0.0	0.2
December	1.3	0.5	-2.9	0.7	0.9	0.1	2.5	0.5	0.3
March	0.4	-0.8	-3.0	-0.4	0.1	0.2	1.7	2.1	0.0
June	0.6	0.1	-3.5	0.3	-2.3	0.8	0.2	0.5	-0.6



**AVERAGE RETAIL PRICES OF SELECTED CONSUMER ITEMS  
Adelaide (cents)**

Item	Unit	Quarter				
		June 1996	Sept. 1996	Dec. 1996	Mar. 1997	June 1997
Milk, carton, supermarket sales	1 litre	113	114	116	116	122
Cheese, processed, sliced, wrapped	500g	337	322	318	318	320
Butter	500g	167	160	172	167	161
Bread, white loaf, sliced, supermarket sales	680g	141	154	157	153	160
Self-raising flour	2kg	238	243	227	240	235
Beef:						
Rump steak	1kg	1,168	1,123	1,061	1,157	1,141
Corned silverside	1kg	645	624	625	597	602
Lamb:						
Leg	1kg	584	586	563	572	574
Loin chops	1kg	812	808	778	799	792
Forequarter chops	1kg	544	555	528	568	547
Pork:						
Leg	1kg	608	621	617	616	574
Loin chops	1kg	765	778	793	799	792
Chicken, frozen	1kg	348	369	375	351	370
Bacon, middle rashers	250g pkt	289	292	317	325	295
Sausages	1kg	358	351	351	359	360
Potatoes	1kg	70	67	73	78	108
Onions	1kg	74	83	128	134	114
Peaches, canned	825g	189	174	190	182	185
Eggs, 55g	doz	240	239	248	246	246
Sugar, white	2kg	180	182	182	183	182
Tea	250g	159	168	172	169	175
Coffee, instant, jar	150g	528	509	513	500	539
Margarine, polyunsaturated	500g	141	139	143	141	133
Petrol:						
Leaded	1 litre	75.9	73.6	76.1	77.5	75.4
Unleaded	1 litre	73.6	71.3	73.7	75.2	73.0

**ESTIMATED RESIDENT POPULATION AND COMPONENTS OF POPULATION CHANGE  
South Australia**

Period	Live births(a)	Deaths(a)	Components of population change			Total increase	Population at end of period (c)
			Natural increase	Net migration			
				Interstate	Overseas (b)		
ANNUAL							
1986-87	19,628	10,577	9,051	-3,977	6,200	10,214	1,392,764
1987-88	19,288	10,799	8,489	-1,240	5,952	12,145	1,404,909
1988-89	19,528	10,814	8,664	-221	6,665	14,120	1,419,029
1989-90	19,653	11,329	8,253	-252	5,762	13,027	1,432,056
1990-91	19,966	11,120	8,767	1,545	4,619	14,931	1,446,299
1991-92	19,530	11,035	8,532	-133	2,897	11,296	1,456,523
1992-93	19,686	11,163	8,403	-4,650	1,546	5,299	1,460,730
1993-94	20,036	11,743	7,949	-3,466	1,994	6,477	1,466,127
1994-95	19,559	11,496	7,902	-6,529	2,883	4,256	1,469,411
1995-96	14,109	11,186	7,645	-6,238	4,119	5,526	1,474,389
MONTHLY/QUARTERLY							
1995 - 96 -							
October	1,528	1,057	..	..	..	..	..
November	1,665	929	..	..	..	..	..
December	1,397	842	1,752	-1,512	946	1,186	1,470,756
January	1,663	932	..	..	..	..	..
February	1,693	807	..	..	..	..	..
March	1,567	839	2,316	-1,476	1,370	2,210	1,472,966
April	1,416	776	..	..	..	..	..
May	1,732	1,123	..	..	..	..	..
June	1,448	886	1,818	-1,093	697	1,423	1,474,389
1996 - 97 -							
July	1,732	1,102	..	..	..	..	..
August	1,662	1,207	..	..	..	..	..
September	1,464	977	1,575	-1,589	1,042	1,028	1,475,417
October	1,779	1,196	..	..	..	..	..
November	1,536	835	..	..	..	..	..
December	1,424	920	1,780	-1,427	1,003	1,356	1,476,773

(a) Registrations.

(b) Includes category jumping.

(c) For dates prior to June 1996, differences between the total increases shown and the sum of natural increases and net overseas migration arise from retrospective adjustments to population estimates.

**LABOUR FORCE STATUS OF THE CIVILIAN POPULATION**  
**South Australia**

Period	Employed Full-time Males	Employed Full-time Females	Employed Part-time Males	Employed Part-time Females	Employed Total Males	Employed Total Females	Unem- ployed Males	Unem- ployed Females	Labour Force Males	Labour Force Females
<b>ANNUAL AVERAGE ('000)</b>										
1987-88	334.4	137.4	29.3	111.6	363.7	249.0	35.1	24.9	398.8	273.9
1988-89	345.5	145.3	29.7	115.8	375.2	261.1	32.2	22.5	407.4	283.6
1989-90	352.0	149.3	31.5	119.8	383.5	269.1	28.5	20.9	412.0	290.0
1990-91	345.2	148.4	34.1	125.7	379.3	274.1	37.8	25.3	417.1	299.4
1991-92	323.3	145.7	37.5	121.6	360.8	267.3	50.0	29.3	410.8	296.6
1992-93	322.2	143.2	39.2	126.8	361.4	270.0	51.9	29.9	413.3	299.9
1993-94	322.0	146.3	40.0	127.0	362.0	273.3	47.3	29.9	409.3	303.2
1994-95	323.1	151.5	42.6	131.3	365.7	282.8	44.6	28.7	410.3	311.5
1995-96	325.2	150.0	45.5	136.7	370.7	286.7	42.6	26.0	413.2	312.7
1996-97	320.8	150.5	48.6	140.7	369.4	291.2	42.1	27.5	411.5	318.7
<b>PERCENTAGE CHANGE FROM PREVIOUS YEAR, ANNUAL AVERAGE</b>										
1988-89	3.3	5.7	1.4	3.8	3.2	4.9	-8.3	-9.6	2.2	3.5
1989-90	1.9	2.8	6.1	3.5	2.2	3.1	-11.5	-7.1	1.1	2.3
1990-91	-1.9	-0.6	8.3	4.9	-1.1	1.9	32.6	21.1	1.2	3.2
1991-92	-6.3	-1.8	10.0	-3.3	-4.9	-2.5	32.3	15.8	-1.5	-0.9
1992-93	-0.3	-1.7	4.5	4.3	0.2	1.0	3.8	2.0	0.6	1.1
1993-94	-0.1	2.2	2.0	0.2	0.2	1.2	-8.9	0.0	-1.0	1.1
1994-95	0.3	3.6	6.5	3.4	1.0	3.5	-5.7	-4.0	0.2	2.7
1995-96	0.6	-1.0	6.8	4.1	1.4	1.4	-4.5	-9.4	0.7	0.4
1996-97	-1.4	0.4	6.8	2.9	-0.4	1.6	-1.1	5.7	-0.4	1.9
<b>MONTHLY, ORIGINAL ('000)</b>										
1996 - 97 -										
July	323.7	151.0	47.0	141.6	370.7	292.6	38.2	25.9	408.9	318.5
August	315.9	148.2	49.9	142.0	365.8	290.2	41.3	26.6	407.1	316.8
September	316.7	152.0	49.0	141.5	365.7	293.5	43.0	27.5	408.7	320.9
October	321.0	151.8	45.9	140.5	366.9	292.3	40.7	27.0	407.6	319.4
November	321.0	149.7	47.8	138.9	368.7	288.7	41.3	25.1	410.0	313.7
December	327.6	153.0	46.3	139.7	373.8	292.7	41.3	29.3	415.1	322.0
January	321.3	151.3	44.8	133.5	366.2	284.8	44.9	28.8	411.0	313.6
February	320.5	152.4	47.6	140.0	368.1	292.3	44.2	30.2	412.3	322.5
March	318.6	148.6	54.9	145.6	373.5	294.1	41.6	29.5	415.1	323.6
April	319.9	148.2	49.3	143.2	369.2	291.5	43.8	27.4	413.0	318.8
May	318.3	149.2	51.6	140.2	369.9	289.4	44.0	25.7	413.9	315.1
June	324.9	151.1	49.1	141.6	374.0	292.7	41.4	26.8	415.4	319.5
1997 - 98 -										
July	325.9	149.3	47.5	140.1	373.4	289.4	40.9	27.0	414.3	316.5
<b>MONTHLY, TREND ('000)</b>										
1996 - 97 -										
July	320.7	150.8	48.2	140.5	368.9	291.3	41.0	27.3	409.9	318.7
August	319.7	150.8	48.7	140.4	368.4	291.2	41.2	27.6	409.6	318.9
September	319.4	150.6	48.4	140.4	367.8	291.0	41.5	27.7	409.3	318.7
October	319.5	150.4	48.1	140.4	367.6	290.8	41.7	27.7	409.3	318.5
November	320.1	150.2	47.6	140.8	367.7	291.0	41.7	27.5	409.4	318.5
December	320.7	150.1	47.3	141.3	368.0	291.4	41.6	27.3	409.6	318.7
January	321.1	150.1	47.6	141.9	368.7	292.0	41.6	27.1	410.3	319.1
February	321.2	150.2	48.1	142.2	369.3	292.4	42.0	27.1	411.3	319.5
March	321.2	150.4	48.8	141.9	370.0	292.3	42.6	27.1	412.6	319.4
April	321.4	150.5	49.5	141.2	370.9	291.7	43.1	27.3	414.0	319.0
May	322.0	150.6	49.8	140.2	371.8	290.8	43.5	27.6	415.3	318.4
June	322.8	150.6	49.8	139.1	372.6	289.7	43.7	27.9	416.3	317.6
1997 - 98 -										
July	323.7	150.6	49.8	138.0	373.5	288.6	43.8	28.3	417.3	316.9
<b>PERCENTAGE CHANGE FROM PREVIOUS MONTH, TREND</b>										
1996 - 97 -										
August	-0.3	0.0	1.0	-0.1	-0.1	0.0	0.5	1.1	-0.1	0.1
September	-0.1	-0.1	-0.6	0.0	-0.2	-0.1	0.7	0.4	-0.1	-0.1
October	0.0	-0.1	-0.6	0.0	-0.1	-0.1	0.5	0.0	0.0	-0.1
November	0.2	-0.1	-1.0	0.3	0.0	0.1	0.0	-0.7	0.0	0.0
December	0.2	-0.1	-0.6	0.4	0.1	0.1	-0.2	-0.7	0.0	0.1
January	0.1	0.0	0.6	0.4	0.2	0.2	0.0	-0.7	0.2	0.1
February	0.0	0.1	1.1	0.2	0.2	0.1	1.0	0.0	0.2	0.1
March	0.0	0.1	1.5	-0.2	0.2	0.0	1.4	0.0	0.3	0.0
April	0.1	0.1	1.4	-0.5	0.2	-0.2	1.2	0.7	0.3	-0.1
May	0.2	0.1	0.6	-0.7	0.2	-0.3	0.9	1.1	0.3	-0.2
June	0.2	0.0	0.0	-0.8	0.2	-0.4	0.5	1.1	0.2	-0.3
1997 - 98 -										
July	0.3	0.0	0.0	-0.8	0.2	-0.4	0.2	1.4	0.2	-0.2

**LABOUR FORCE STATUS OF THE CIVILIAN POPULATION AGED 15 AND OVER**  
**South Australia**

<i>Period</i>	<i>Civilian Population aged 15 and over Males ('000)</i>	<i>Civilian Population aged 15 and over Females ('000)</i>	<i>Unemployment rate Ages 15-19 Persons (%)</i>	<i>Unemployment rate All Ages Males (%)</i>	<i>Unemployment rate All Ages Females (%)</i>	<i>Unemployment rate All Ages Persons (%)</i>	<i>Participation rate Males (%)</i>	<i>Participation rate Females (%)</i>	<i>Participation rate Persons (%)</i>
<b>ANNUAL AVERAGE</b>									
1987-88	542.4	560.0	20.8	8.8	9.1	8.9	73.5	48.9	61.0
1988-89	547.9	566.9	17.8	7.9	7.9	7.9	74.3	50.0	62.0
1989-90	552.4	573.4	16.2	6.9	7.2	7.1	74.6	50.6	62.4
1990-91	558.3	579.8	19.2	9.1	8.4	8.8	74.7	51.6	63.0
1991-92	563.9	585.4	25.0	12.1	9.9	11.2	72.9	50.7	61.6
1992-93	567.4	588.9	26.6	12.6	10.0	11.5	72.8	51.0	61.7
1993-94	570.6	592.0	28.3	11.5	9.8	10.8	71.7	51.2	61.3
1994-95	573.7	594.7	25.2	10.9	9.2	10.2	71.5	52.4	61.8
1995-96	576.2	597.1	27.2	10.3	8.3	9.5	71.7	52.4	61.9
1996-97	579.8	600.6	23.7	10.2	8.6	9.5	71.0	53.1	61.9
<b>PERCENTAGE CHANGE FROM PREVIOUS YEAR, ANNUAL AVERAGE</b>									
1988-89	1.0	1.2	..	..	..	..	..	..	..
1989-90	0.8	1.1	..	..	..	..	..	..	..
1990-91	1.1	1.1	..	..	..	..	..	..	..
1991-92	1.0	1.0	..	..	..	..	..	..	..
1992-93	0.6	0.6	..	..	..	..	..	..	..
1993-94	0.6	0.6	..	..	..	..	..	..	..
1994-95	0.6	0.5	..	..	..	..	..	..	..
1995-96	0.4	0.5	..	..	..	..	..	..	..
1996-97	0.6	0.4	..	..	..	..	..	..	..
<b>MONTHLY, ORIGINAL</b>									
1995 - 96 -									
May	577.3	598.2	27.3	10.1	8.4	9.4	70.7	53.2	61.8
June	577.6	598.5	22.4	9.3	7.5	8.5	70.6	53.0	61.7
1996 - 97 -									
July	578.0	598.9	24.1	9.3	8.1	8.8	70.7	53.2	61.8
August	578.4	599.2	23.8	10.2	8.4	9.4	70.4	52.9	61.5
September	578.8	599.6	23.7	10.5	8.6	9.7	70.6	53.5	61.9
October	579.1	599.9	20.7	10.0	8.5	9.3	70.4	53.2	61.7
November	579.5	600.2	22.2	10.1	8.0	9.2	70.8	52.3	61.4
December	579.8	600.5	25.9	9.9	9.1	9.6	71.6	53.6	62.5
January	580.0	600.7	22.9	10.9	9.2	10.2	70.9	52.2	61.4
February	580.3	601.0	23.5	10.7	9.4	10.1	71.1	53.7	62.2
March	580.5	601.2	22.7	10.0	9.1	9.6	71.5	53.8	62.5
April	580.8	601.5	26.7	10.6	8.6	9.7	71.1	53.0	61.9
May	581.1	601.8	23.7	10.6	8.2	9.6	71.2	52.4	61.6
June	581.5	602.2	24.3	10.0	8.4	9.3	71.4	53.1	62.1
1997 - 98 -									
July	581.9	602.6	21.6	9.9	8.5	9.3	71.2	52.5	61.7
<b>MONTHLY, TREND</b>									
1995 - 96 -									
May	n.a.	n.a.	n.a.	10.1	8.4	9.4	71.2	53.0	61.9
June				10.0	8.5	9.4	71.1	53.1	61.9
1996 - 97 -									
July				10.0	8.6	9.4	70.9	53.2	61.9
August				10.1	8.7	9.4	70.8	53.2	61.9
September				10.1	8.7	9.5	70.7	53.1	61.8
October				10.2	8.7	9.5	70.7	53.1	61.7
November				10.2	8.6	9.5	70.6	53.1	61.7
December				10.1	8.6	9.5	70.6	53.1	61.7
January				10.1	8.5	9.4	70.7	53.1	61.8
February				10.2	8.5	9.5	70.9	53.2	61.9
March				10.3	8.5	9.5	71.1	53.1	61.9
April				10.4	8.6	9.6	71.3	53.0	62.0
May				10.5	8.7	9.7	71.5	52.9	62.0
June				10.5	8.8	9.8	71.6	52.7	62.0
1997 - 98 -									
July				10.5	8.9	9.8	71.7	52.6	62.0

**AVERAGE WEEKLY EARNINGS OF EMPLOYEES**  
**South Australia**

Period	Full-time adults						All employees		
	Ordinary time earnings			Total earnings			Males	Females	Persons
	Males	Females	Persons	Males	Females	Persons			
ANNUAL AVERAGE (\$ per week)									
1986-87	431.80	363.70	412.20	455.90	370.20	431.20	411.80	268.90	352.20
1987-88	458.60	389.70	438.40	485.00	397.00	459.20	440.10	295.10	379.60
1988-89	481.50	424.30	465.70	517.60	435.10	494.90	473.40	315.10	408.50
1989-90	517.50	454.90	499.40	560.70	466.50	533.50	511.60	338.00	437.80
1990-91	561.30	486.10	537.90	598.90	496.10	566.90	546.70	358.10	462.00
1991-92	588.40	524.10	567.80	624.90	534.00	595.80	564.80	386.90	483.70
1992-93	610.10	534.90	585.40	646.40	546.80	613.70	560.00	382.60	477.40
1993-94	625.10	547.60	600.00	667.50	560.10	632.70	595.10	396.60	503.30
1994-95	632.70	559.10	608.20	681.70	572.50	645.30	599.90	411.90	513.40
1995-96	653.80	555.90	622.80	703.15	568.50	660.05	620.10	403.90	520.65
1996-97	678.20	575.10	644.33	735.08	589.35	687.20	636.85	408.73	529.78
PERCENTAGE CHANGE FROM PREVIOUS YEAR									
1987-88	6.2	7.1	6.4	6.4	7.2	6.5	6.9	9.7	7.8
1988-89	5.0	8.9	6.2	6.7	9.6	7.8	7.6	6.8	7.6
1989-90	7.5	7.2	7.2	8.3	7.2	7.8	8.1	7.3	7.2
1990-91	8.5	6.9	7.7	6.8	6.3	6.3	6.9	5.9	5.5
1991-92	4.8	7.8	5.6	4.3	7.6	5.1	3.3	8.0	4.7
1992-93	3.7	2.1	3.1	3.4	2.4	3.0	-0.8	-1.1	-1.3
1993-94	2.5	2.4	2.5	3.3	2.4	3.1	6.3	3.7	5.4
1994-95	1.2	2.1	1.4	2.1	2.2	2.0	0.8	3.9	2.0
1995-96	3.3	-0.6	2.4	3.1	-0.7	2.3	3.4	-1.9	1.4
1996-97	3.7	3.5	3.5	4.5	3.7	4.1	2.7	1.2	1.8
QUARTERLY (\$ per week)									
1994 - 95 -									
19 August	628.20	553.70	602.60	674.20	566.70	637.20	591.40	410.80	507.40
18 November	619.10	558.00	598.60	667.50	572.80	635.70	586.90	410.20	505.10
17 February	648.40	560.80	619.90	699.90	572.80	658.50	620.10	415.80	527.90
19 May	635.10	563.90	611.70	685.20	577.80	649.90	601.10	410.80	513.30
1995 - 96 -									
18 August	639.90	560.10	613.80	684.50	571.80	647.60	600.80	408.60	510.20
17 November	647.60	549.20	616.10	693.10	560.90	650.90	607.60	396.30	510.60
16 February	658.90	557.20	626.30	713.60	569.50	667.30	631.40	402.40	527.20
17 May	668.90	557.10	633.80	721.40	571.80	674.40	640.50	408.30	534.60
1996 - 97 -									
16 August	666.70	562.40	632.40	720.10	574.40	672.30	628.50	403.60	523.60
15 November	669.60	575.30	639.50	728.30	591.80	684.80	626.80	402.30	522.20
21 February	685.60	578.20	649.70	741.90	594.00	692.40	639.80	409.50	530.80
16 May	690.90	584.50	655.70	750.00	597.20	699.30	652.30	419.50	542.50
PERCENTAGE CHANGE FROM CORRESPONDING REFERENCE DATE IN PREVIOUS YEAR									
1995 - 96 -									
17 November	4.6	-1.6	2.9	3.8	-2.1	2.4	3.5	-3.4	1.1
16 February	1.6	-0.6	1.0	2.0	-0.6	1.3	1.8	-3.2	-0.1
17 May	5.3	-1.2	3.6	5.3	-1.0	3.8	6.6	-0.6	4.1
1996 - 97 -									
16 August	4.2	0.4	3.0	5.2	0.5	3.8	4.6	-1.2	2.6
15 November	3.4	4.8	3.8	5.1	5.5	5.2	3.2	1.5	2.3
21 February	4.1	3.8	3.7	4.0	4.3	3.8	1.3	1.8	0.7
16 May	3.3	4.9	3.5	4.0	4.4	3.7	1.8	2.7	1.5
PERCENTAGE CHANGE FROM PREVIOUS REFERENCE DATE									
1994 - 95 -									
17 February	4.7	0.5	3.6	4.9	0.0	3.6	5.7	1.4	4.5
19 May	-2.1	0.6	-1.3	-2.1	0.9	-1.3	-3.1	-1.2	-2.8
1995 - 96 -									
18 August	0.8	-0.7	0.3	-0.1	-1.0	-0.4	0.0	-0.5	-0.6
17 November	1.2	-1.9	0.4	1.3	-1.9	0.5	1.1	-3.0	0.1
16 February	1.7	1.5	1.7	3.0	1.5	2.5	3.9	1.5	3.3
17 May	1.5	0.0	1.2	1.1	0.4	1.1	1.4	1.5	1.4
1996 - 97 -									
16 August	-0.3	1.0	-0.2	-0.2	0.5	-0.3	-1.9	-1.2	-2.1
15 November	0.4	2.3	1.1	1.1	3.0	1.9	-0.3	-0.3	-0.3
21 February	2.4	0.5	1.6	1.9	0.4	1.1	2.1	1.8	1.6
16 May	0.8	1.1	0.9	1.1	0.5	1.0	2.0	2.4	2.2

**FINANCE COMMITMENTS**  
**South Australia**

Secured housing finance commitments to individuals						
Construction and purchase of dwellings						
Period	Number of dwelling units	Amount (\$ million)	Alterations and additions (\$ million)	Personal finance commitments (\$ million)	Commercial finance commitments (\$ million)	Lease finance commitments (\$ million)
<b>ANNUAL</b>						
1986-87	21,658	965.5	47.1	1,222.4	4,242.8	334.5
1987-88	26,582	1,266.6	47.0	1,448.9	6,486.6	392.1
1988-89	29,977	1,574.2	51.4	1,534.1	7,285.5	512.4
1989-90	25,650	1,438.2	45.8	1,525.7	6,926.4	445.4
1990-91	28,694	1,731.3	58.8	1,503.6	6,257.0	323.2
1991-92	31,765	2,083.8	88.8	1,456.7	6,667.9	256.2
1992-93	36,960	2,569.5	102.8	1,656.9	5,122.5	249.5
1993-94	45,725	3,387.9	221.8	1,840.3	5,467.2	250.6
1994-95	36,429	2,879.7	242.2	2,152.2	5,405.6	271.4
1995-96	38,707	2,982.2	240.7	2,211.5	6,516.2	265.4
1996-97	36,680	2,956.1	188.1	2,612.0	6,092.4	232.0
<b>PERCENTAGE CHANGE FROM PREVIOUS YEAR</b>						
1987-88	22.7	31.2	-0.2	18.5	52.9	17.2
1988-89	12.8	24.3	9.4	5.9	12.3	30.7
1989-90	-14.4	-8.6	-10.9	-0.5	-4.9	-13.1
1990-91	11.9	20.4	28.4	-1.4	-9.7	-27.4
1991-92	10.7	20.4	51.0	-3.1	6.6	-20.7
1992-93	16.4	23.3	15.8	13.7	-23.2	-2.6
1993-94	23.7	31.9	115.7	11.1	6.7	0.5
1994-95	-20.3	-15.0	9.2	16.9	-1.1	8.3
1995-96	6.3	3.6	-0.6	2.8	20.5	-2.2
1996-97	-5.2	-0.9	-21.9	18.1	-6.5	-12.6
<b>MONTHLY</b>						
1995 - 96 -						
April	3,271	249.5	18.3	175.1	604.8	16.5
May	3,276	252.0	18.9	192.4	773.7	24.8
June	2,707	213.6	26.1	182.0	627.7	31.3
1996 - 97 -						
July	3,013	237.8	21.7	188.3	656.7	22.8
August	2,776	216.9	18.8	180.8	444.0	18.9
September	3,064	250.6	19.4	175.0	491.6	22.2
October	2,965	233.6	14.0	203.6	444.8	15.3
November	3,115	248.1	14.2	188.8	541.7	17.8
December	2,995	251.5	13.1	220.7	615.6	19.2
January	2,885	231.3	15.3	221.0	409.1	13.7
February	3,013	246.6	16.4	214.4	415.3	15.3
March	3,117	251.4	12.9	241.7	526.5	13.9
April	3,318	270.4	15.5	251.6	487.5	21.6
May	3,228	264.5	14.8	251.7	561.6	20.7
June	3,191	253.3	11.9	274.4	497.9	30.6
<b>PERCENTAGE CHANGE FROM PREVIOUS MONTH</b>						
1995 - 96 -						
May	0.2	1.0	3.2	9.8	27.9	50.1
June	-17.4	-15.2	37.9	-5.4	-18.9	26.2
1996 - 97 -						
July	11.3	11.3	-16.8	3.4	4.6	-27.1
August	-7.9	-8.8	-13.4	-4.0	-32.4	-17.2
September	10.4	15.5	3.4	-3.2	10.7	17.8
October	-3.2	-6.8	-27.9	16.3	-9.5	-31.2
November	5.1	6.2	1.6	-7.3	21.8	16.6
December	-3.9	1.4	-8.4	16.9	13.6	7.7
January	-3.7	-8.0	17.5	0.1	-33.5	-28.6
February	4.4	6.6	7.0	-3.0	1.5	11.5
March	3.5	2.0	-21.3	12.8	26.8	-8.7
April	6.4	7.5	19.6	4.1	-7.4	55.3
May	-2.7	-2.2	-4.3	0.0	15.2	-4.2
June	-1.1	-4.2	-19.8	9.0	-11.3	47.6

## PUBLICATIONS SOURCE INDEX

- 1 *Australian National Accounts: State Accounts* (5242.0) Quarterly
- 2 *International Merchandise Trade, Australia* (5422.0) Quarterly
- 3 *Retail Trade, Australia* (8501.0) Monthly
- 4 *New Motor Vehicles Registrations, Australia, Preliminary* (9301.0) Monthly
- 5 *Tourist Accommodation, Australia* (8635.0) Quarterly
- 6 *State Estimates of Private New Capital Expenditure* (5646.0) Quarterly
- 7 *Building Approvals, Australia* (8731.0) Monthly
- 8 *Building Activity, Australia* (8752.0) Quarterly
- 8a *Building Activity, Australia, Dwelling Unit Commencements, Preliminary* (8750.0) Quarterly
- 9 *Engineering Construction Activity, Australia* (8762.0) Quarterly
- 10 *Manufacturing Production, Australia, Preliminary* (8301.0) Monthly
- 11 *Livestock Products, Australia* (7215.0) Monthly
- 12 *Actual and Expected Private Mineral Exploration, Australia* (8412.0) Quarterly
- 13 *Consumer Price Index* (6401.0) Quarterly
- 14 *Price Index of Materials Used in House Building, Six State Capital Cities and Canberra* (6408.0) Monthly
- 15 *Price Index of Materials Used in Building Other Than House Building, Six State Capital Cities and Canberra* (6407.0) Monthly
- 16 *House Price Indexes: Eight Capital Cities* (6416.0) Quarterly
- 17 *Australian Demographic Statistics* (3101.0) Quarterly
- 18 *The Labour Force, Australia, Preliminary* (6202.0) Monthly
- 19 *Job Vacancies and Overtime, Australia* (6354.0) Quarterly
- 20 *Industrial Disputes, Australia* (6321.0) Monthly
- 21 Unpublished overseas arrival and departure statistics on microfiche
- 22 *Average Weekly Earnings, States and Australia* (6302.0) Quarterly
- 23 *Award Rates of Pay Indexes, Australia* (6312.0) Monthly
- 24 *Housing Finance for Owner Occupation, Australia* (5609.0) Monthly
- 25 Unpublished statistics available from PC AUSSTATS
- 26 *Reserve Bank of Australia Bulletin*

## ABS PUBLICATIONS AND PRODUCTS

Statistics collected by the ABS are generally made available in published form. Some, including those not published, are available in one or more of the following forms: microfiche, magnetic tape, computer printout, CD, floppy disk, photocopy and clerically extracted tabulation.

Current publications produced by the ABS are listed in the *Catalogue of Publications and Products, Australia* (1101.0). The ABS also issues on Tuesdays and Fridays a *Release Advice* (1105.0) which lists publications to be released within the next few days. The Catalogue and Release Advice are available from any ABS Office.

To receive ABS publications on a regular basis contact the ABS *Publication Mailing Service* on 1800 02 0608.

A large range of data is available via on-line services, diskette, magnetic tape, tape cartridge and CD ROM. For more details about our electronic data services, contact any ABS Office.

The *ABS Information Consultancy Service* has specialist staff to assist and advise clients

with their statistical inquiries. For more detailed information about these services call at the ABS, 55 Currie Street, Adelaide, telephone the Information Officer on (08) 8237 7100, or write to Information Service, ABS, GPO Box 2272, Adelaide SA 5001.

The ABS also provides a *Statistical Consultancy Service*, for expert assistance in survey, sample and questionnaire design, data collection, processing and analysis, and statistical modelling. For more information contact Gary Niedorfer, on (08) 8237 7379.

### SYMBOLS AND OTHER USAGES

n.a. not available  
 n.y.a. not yet available  
 .. not applicable  
 0, 0.0 nil or rounded to zero

Where figures have been rounded, discrepancies may occur between sums of the component items and totals.



## For more information . . .

The ABS publishes a wide range of statistics and other information on Australia's economic and social conditions. Details of what is available in various publications and other products can be found in the ABS Catalogue of Publications and Products available from all ABS Offices.

### ABS Products and Services

Many standard products are available from ABS bookshops located in each State and Territory. In addition to these products, information tailored to the needs of clients can be obtained on a wide range of media by contacting your nearest ABS Office. The ABS also provides a Subscription Service for standard products and some tailored information services.

### National Dial-a-Statistic Line

0055 86 400

*Steadycom P/L: premium rate 25c/20 secs.*

This number gives 24-hour access, 365 days a year, for a range of important economic statistics including the CPI.

### Internet

<http://www.abs.gov.au>

A wide range of ABS information is available via the Internet, with basic statistics available for each State, Territory and Australia. We also have Key National Indicators, ABS product release details and other information of general interest.

### Sales and Inquiries

[client.services@abs.gov.au](mailto:client.services@abs.gov.au)

National Mail Order Service (02) 6252 5249  
Subscription Service 1800 02 0608

	Information Inquiries	Bookshop Sales
CANBERRA	(02) 6252 6627	(02) 6207 0326
SYDNEY	(02) 9268 4611	(02) 9268 4620
MELBOURNE	(03) 9615 7755	(03) 9615 7755
BRISBANE	(07) 3222 6351	(07) 3222 6350
PERTH	(08) 9360 5140	(08) 9360 5307
ADELAIDE	(08) 8237 7100	(08) 8237 7582
HOBART	(03) 6222 5800	(03) 6222 5800
DARWIN	(08) 8943 2111	(08) 8943 2111



Client Services, ABS, PO Box 10, Belconnen ACT 2616

